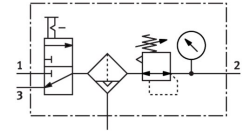


Service unit combination MSB6-AGE:C3:J1-WP

Part number: 8233040

FESTO



 General operating condition

Data sheet

Feature	Value
Size	6
Series	MS
Actuator lock	Rotary knob with detent can be closed with accessories
Mounting position	Vertical +/-5°
Grade of filtration	40 µm
Condensate drain	Fully automatic
Design	On/off valve-filter regulator
Max. condensate volume	38 ml
Controller function	Output pressure constant With primary pressure compensation With secondary exhausting With return flow function
Bowl guard	Plastic bowl guard
Symbol	00991554
Pressure gauge (ANALOG) or Pressure display (DIGITAL)	With pressure gauge
Operating pressure	0.15 MPa ... 2 MPa
Operating pressure	1.5 bar ... 20 bar
Operating pressure	21.75 psi ... 290 psi
Pressure regulation range	0.05 MPa ... 1.2 MPa
Pressure regulation range	0.5 bar ... 12 bar
Pressure regulation range	7.25 psi ... 174 psi
Max. standard flow rate	4300 l/min
Operating medium	Compressed air to ISO 8573-1:2010 [7:4:4] Inert gas
Note on operating and pilot medium	Lubricated operation possible (in which case lubricated operation will always be required)
Corrosion resistance class CRC	2 - Moderate corrosion stress
LABS (PWIS) conformity	VDMA24364-B1/B2-L
Storage temperature	-10 °C ... 60 °C
Air purity class at output	Compressed air to ISO 8573-1:2010 [7:4:4]
Media temperature	-10 °C ... 60 °C
Ambient temperature	-10 °C ... 60 °C
Product weight	1910 g
Type of mounting	With mounting bracket
Pneumatic connection, port 1	G3/4
Pneumatic connection, port 2	G3/4

Feature	Value
Material filter	Packaging unit
Material housing	Die-cast aluminium
Material bowl	Makrolon®