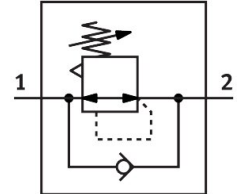


Pressure regulator MS4-LR-1/8-D6-VS-E11

Part number: 8232816

FESTO



 [General operating condition](#)

Data sheet

Feature	Value
Size	4
Series	MS
Actuator lock	Rotary knob with integrated lock
Mounting position	Any
Design	Directly actuated diaphragm regulator
Controller function	Output pressure constant With secondary exhausting With return flow function
Symbol	00991559
Operating pressure	0.08 MPa ... 1.4 MPa
Operating pressure	0.8 bar ... 14 bar
Pressure regulation range	0.3 bar ... 7 bar
Max. pressure hysteresis	0.025 MPa
Max. pressure hysteresis	0.25 bar
Max. pressure hysteresis	3.625 psi
Standard nominal flow rate (standardised to DIN 1343)	1150 l/min
Operating medium	Compressed air to ISO 8573-1:2010 [7:4:4] Inert gas
Note on operating and pilot medium	Lubricated operation possible (in which case lubricated operation will always be required)
Corrosion resistance class CRC	2 - Moderate corrosion stress
LABS (PWIS) conformity	VDMA24364-B1/B2-L
Storage temperature	-10 °C ... 60 °C
Suitable for use with food	See supplementary material information
Media temperature	-10 °C ... 60 °C
Ambient temperature	-10 °C ... 60 °C
Product weight	350 g
Type of mounting	With accessories
Pneumatic connection, port 1	G1/8
Pneumatic connection, port 2	G1/8
Note on materials	RoHS compliant
Material sub-base	Die-cast aluminium
Material control panel	Process automation POM
Material seals	NBR

Feature	Value
Material housing	Die-cast aluminium
Material membrane	NBR