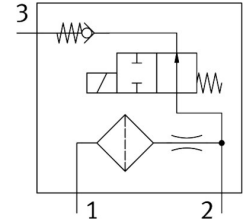


# Pilot control VACC-P2-0.4-K4-1-EX4A

Part number: 8204400

FESTO



[PDF General operating condition](#)

## Data sheet

Feature	Value
Type of actuation	Electrical
Mounting position	Any
Conforms to standard	ISO 15218
Symbol	00997593
Operating pressure	0.2 MPa ... 0.8 MPa
Operating pressure	2 bar ... 8 bar
Operating pressure	29 psi ... 116 psi
Air consumption at nominal operating pressure	0.35 l/min
Switching time off	40 ms
Switching time on	40 ms
Duty cycle	100%
Required current consumption	0.003 A
Max. input power $P_i$	2.1 W
Max. input voltage $U_i$	30 V
Max. input current $I_i$	0.33 A
Nominal operating voltage DC	24 V
Max. intrinsically safe circuit input parameter	See IECEx certificate
Characteristic coil data	14 - 30 V DC: 0.04 - 0.19 W
Effective internal capacitance $C_i$	1 nF
Effective internal inductivity $L_i$	Negligibly low
CE mark (see declaration of conformity)	To EU EMC Directive To EU Explosion Protection Directive (ATEX) In accordance with EU RoHS Directive
UKCA marking (see declaration of conformity)	To UK instructions for EMC To UK EX instructions To UK RoHS instructions
Explosion protection certification outside the EU	EPL Db (IEC-EX) EPL Gb (IECEX)
Explosion protection	Zone 1 (ATEX) Zone 1 (IEC-EX) Zone 2 (ATEX) Zone 21 (ATEX) Zone 21 (IEC-EX) Zone 22 (ATEX)
Certificate issuing authority	BVS 25 ATEX E 063 IECEX BVS 25.0061

Feature	Value
ATEX category gas	II 2G
ATEX category dust	II 2D
Explosion ignition protection type for gas	Ex ia IIC/IIB T6/T4 Gb
Explosion ignition protection type for dust	Ex ia IIIC T85°C/135°C Db
Explosion ambient temperature	T4: -25°C ≤ Ta ≤ +60°C T6: -25°C ≤ Ta ≤ +60°C
Operating medium	Compressed air to ISO 8573-1:2010 [7:2:4]
Corrosion resistance class CRC	4 - Very high corrosion stress
LABS (PWIS) conformity	VDMA24364 zone III
Storage temperature	-40 °C ... 80 °C
Degree of protection	IP65 To IEC 60529
Note on degree of protection	See user documentation
Ambient temperature	-25 °C ... 60 °C
Max. tightening torque for fitting	3 Nm
Product weight	440 g
Electrical connection	Spring-loaded terminal Terminal box, cable entry thread M20x1.5
Cable diameter	4 mm ... 13 mm
Nominal cross section conductor	0.25 mm <sup>2</sup> ... 2.5 mm <sup>2</sup>
Type of mounting	CNOMO
Note on materials	RoHS compliant
Material seals	EPDM FVMQ VMQ
Material housing	Ematal coated aluminium
Material screws	High-alloy stainless steel
Material winding	Copper