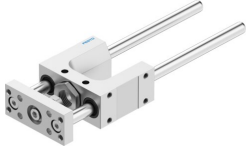


Guide unit FEN-12/16-100-GF

Part number: 8204043

FESTO



 [General operating condition](#)

Data sheet

Feature	Value
Size	12/16
Stroke	100 mm
Mounting position	Any
Guide	Plain-bearing guide
Design	Guidance
Explosion protection	The information in the certificate must be observed!
LABS (PWIS) conformity	VDMA24364-B2-L
Ambient temperature	-20 °C ... 80 °C
Displacement force	15 N
Moving mass	281 g
Product weight	610 g
Type of mounting	With female thread
Note on materials	RoHS compliant
Material guide component	High-alloy steel
Material housing	Anodised wrought aluminium alloy
Material yoke plate	Anodised wrought aluminium alloy