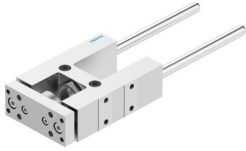


# Guide unit FEN-25-100-KF

Part number: 8204036

FESTO



 [General operating condition](#)

## Data sheet

Feature	Value
Size	25
Stroke	100 mm
Mounting position	Any
Guide	Recirculating ball bearing guide
Design	Guidance
Explosion protection	The information in the certificate must be observed!
LABS (PWIS) conformity	VDMA24364-B2-L
Ambient temperature	-20 °C ... 80 °C
Max. force F <sub>y</sub>	520 N
Max. force F <sub>y</sub> static	830 N
Max. force F <sub>z</sub>	520 N
Max. force F <sub>z</sub> static	830 N
Max. moment M <sub>x</sub>	15 Nm
Max. torque M <sub>x</sub> static	24 Nm
Max. moment M <sub>y</sub>	20 Nm
Max. torque M <sub>y</sub> static	31 Nm
Max. moment M <sub>z</sub>	20 Nm
Max. torque M <sub>z</sub> static	31 Nm
Displacement force	15 N
Moving mass	389 g
Product weight	933 g
Type of mounting	With female thread
Note on materials	RoHS compliant
Material guide component	Tempered steel
Material housing	Anodised wrought aluminium alloy
Material yoke plate	Anodised wrought aluminium alloy