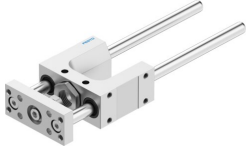


# Guide unit FEN-12/16-100-KF

Part number: 8204027

FESTO



 [General operating condition](#)

## Data sheet

Feature	Value
Size	12/16
Stroke	100 mm
Mounting position	Any
Guide	Recirculating ball bearing guide
Design	Guidance
Explosion protection	The information in the certificate must be observed!
LABS (PWIS) conformity	VDMA24364-B2-L
Ambient temperature	-20 °C ... 80 °C
Max. force Fy	520 N
Max. force Fy static	830 N
Max. force Fz	520 N
Max. force Fz static	830 N
Max. moment Mx	12 Nm
Max. torque Mx static	20 Nm
Max. moment My	7 Nm
Max. torque My static	12 Nm
Max. moment Mz	7 Nm
Max. torque Mz static	12 Nm
Displacement force	15 N
Moving mass	281 g
Product weight	549 g
Type of mounting	With female thread
Note on materials	RoHS compliant
Material guide component	Tempered steel
Material housing	Anodised wrought aluminium alloy
Material yoke plate	Anodised wrought aluminium alloy