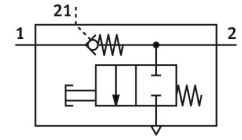


Check valve VBNF-LBA-G18-Q4-F1A

Part number: 8193272

FESTO



 [General operating condition](#)

Data sheet

Feature	Value
Valve function	Piloted non-return function
Selection of additional functions	Manual exhausting
Pneumatic connection, port 1	QS-4
Pneumatic connection, port 2	G1/8
Pilot air port 21	QS-4
Type of mounting	Screw-in
Operating pressure	0.02 MPa ... 1 MPa
Operating pressure	0.2 bar ... 10 bar
Pilot pressure	0.2 MPa ... 1 MPa
Pilot pressure	2 bar ... 10 bar
Pilot pressure	29 psi ... 145 psi
Ambient temperature	-10 °C ... 60 °C
Material housing	PBT
Operating medium	Compressed air to ISO 8573-1:2010 [7:4:4]
Mounting position	Any
Type act., cont. n.-r. func.	Pneumatic
Manual exhaust function	Non-detenting
Symbol	00991957
Rotatability	360°/no continuous swivelling permissible
Operating pressure complete temperature range	0.02 MPa ... 1 MPa
Operating pressure complete temperature range	0.2 bar ... 10 bar
Operating pressure complete temperature range	2.9 psi ... 145 psi
Standard flow rate 1->2 (6-0)	500 l/min
Standard nominal flow rate 1->2 (6-5)	260 l/min
Switching time off	9 ms
Switching time on	6 ms
Explosion protection	Zone 2 (ATEX) Zone 22 (ATEX)
Note on operating and pilot medium	Lubricated operation possible (in which case lubricated operation will always be required)
Corrosion resistance class CRC	2 - Moderate corrosion stress
LABS (PWIS) conformity	VDMA24364-B1/B2-L
Suitability for the production of Li-ion batteries	Suitable for battery production with reduced Cu/Zn/Ni values (F1a)
Media temperature	-10 °C ... 60 °C
Pilot medium	Compressed air to ISO 8573-1:2010 [7:4:4]
Nominal torque	6 Nm

Feature	Value
Tolerance for nominal tightening torque	±20%
Product weight	27.9 g
Material covering	ES-BE
Note on materials	RoHS compliant
Material cover	PBT
Material seals	NBR
Material hollow bolt	Wrought aluminium alloy
Material release ring	POM