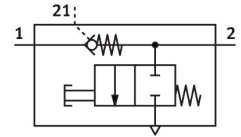
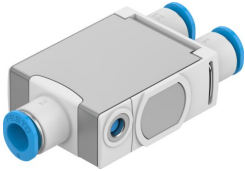


# Check valve VBNF-CBA-Q6-Q6-F1A

Part number: 8193270

FESTO



[General operating condition](#)

## Data sheet

Feature	Value
Valve function	With non-return function
Selection of additional functions	Manual exhausting
Pneumatic connection, port 1	QS-6
Pneumatic connection, port 2	QS-6
Pilot air port 21	QS-6
Type of actuation	Manual
Standard nominal flow rate (standardised to DIN 1343)	260 l/min
Operating pressure	≤1 MPa
Operating pressure	≤10 bar
Pilot pressure	0.2 MPa ... 1 MPa
Pilot pressure	2 bar ... 10 bar
Pilot pressure	29 psi ... 145 psi
Ambient temperature	-10 °C ... 60 °C
Material housing	PBT
Housing colour	Grey
Operating medium	Compressed air to ISO 8573-1:2010 [7:4:4]
Mounting position	Any
Type act., cont. n.-r. func.	Pneumatic
Manual exhaust function	Non-detenting
Symbol	00991957
Operating pressure complete temperature range	0.2 bar ... 10 bar
Standard flow rate 1->2 (6-0)	500 l/min
Standard nominal flow rate 1->2 (6-5)	260 l/min
Switching time off	9 ms
Switching time on	6 ms
Explosion protection	Zone 2 (ATEX) Zone 22 (ATEX)
Note on operating and pilot medium	Lubricated operation possible
Corrosion resistance class CRC	2 - Moderate corrosion stress
LABS (PWIS) conformity	VDMA24364-B1/B2-L
Suitability for the production of Li-ion batteries	Suitable for battery production with reduced Cu/Zn/Ni values (F1a)
Storage temperature	-20 °C ... 70 °C
Media temperature	-10 °C ... 60 °C
Pilot medium	Compressed air to ISO 8573-1:2010 [7:4:4]
Product weight	23.3 g

<b>Feature</b>	<b>Value</b>
Material covering	ES-BE
Note on materials	RoHS compliant
Material cover	PBT
Material seals	NBR
Material release ring	POM