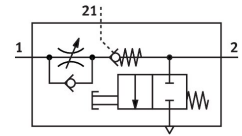


One-way flow control valve VFOF-CE-BAH-Q4-Q4

Part number: 8193268

FESTO



[PDF](#) General operating condition

Data sheet

| Feature | Value |
|--|---|
| Valve function | Exhaust air one-way flow control function |
| Selection of additional functions | Piloted check valve |
| Pneumatic connection, port 1 | QS-4 |
| Pneumatic connection, port 2 | QS-4 |
| Type of actuation | Manual |
| Pilot air port 21 | QS-4 |
| Standard nominal flow rate in flow control direction | 120 l/min |
| Standard nominal flow rate in blocked direction | 210 l/min |
| Operating pressure | ≤1 MPa |
| Operating pressure | ≤10 bar |
| Operating pressure | ≤145 psi |
| Pilot pressure | 0.2 MPa ... 1 MPa |
| Pilot pressure | 2 bar ... 10 bar |
| Pilot pressure | 29 psi ... 145 psi |
| Ambient temperature | -10 °C ... 60 °C |
| Material housing | PBT |
| Explosion protection | Zone 2 (ATEX) Zone 22 (ATEX) |
| Mounting position | Any |
| Type act., cont. n.-r. func. | Pneumatic |
| Manual exhaust function | Non-detenting |
| Symbol | 00991958 |
| Operating pressure complete temperature range | 0.2 bar ... 10 bar |
| Standard flow rate in flow control direction 0.6->0 MPa (6->0 bar, 87->0 psi) | 200 l/min |
| Standard flow rate in non-return direction 0.6->0 MPa (6->0 bar, 87->0 psi) actuated | 210 l/min |
| Standard flow rate in non-return direction 0.6->0 MPa (6->0 bar, 87->0 psi) non-actuated | 210 l/min |
| Standard nominal flow rate in non-return direction actuated | 125 l/min |
| Standard nominal flow rate in non-return direction non-actuated | 115 l/min |
| Switching time off | 9 ms |
| Switching time on | 6 ms |
| Operating medium | Compressed air to ISO 8573-1:2010 [7:4:4] |
| Note on operating and pilot medium | Lubricated operation possible |
| LABS (PWIS) conformity | VDMA24364-B1/B2-L |

| Feature | Value |
|--|---|
| Storage temperature | -20 °C ... 70 °C |
| Media temperature | -10 °C ... 60 °C |
| Pilot medium | Compressed air to ISO 8573-1:2010 [7:4:4] |
| Permissible actuation moment, regulating screw | 1 Nm |
| Product weight | 25.1 g |
| Material covering | ES-BE |
| Note on materials | RoHS compliant |
| Material cover | PBT |
| Material seals | NBR |
| Material sleeve | Wrought aluminium alloy |
| Material release ring | POM |
| Material adjusting screw | Brass |