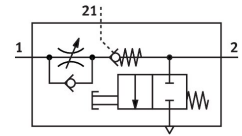


# One-way flow control valve VFOF-CE-BAH-Q6-Q6

Part number: 8193267

FESTO



 [General operating condition](#)

## Data sheet

| Feature  | Value                                     |
|--|---|
| Valve function   | Exhaust air one-way flow control function |
| Selection of additional functions  | Piloted check valve                       |
| Pneumatic connection, port 1   | QS-6                                      |
| Pneumatic connection, port 2   | QS-6                                      |
| Type of actuation  | Manual                                    |
| Pilot air port 21  | QS-6                                      |
| Standard nominal flow rate in flow control direction                                     | 240 l/min                                 |
| Standard nominal flow rate in blocked direction  | 400 l/min ... 460 l/min                   |
| Operating pressure   | ≤1 MPa                                    |
| Operating pressure   | ≤10 bar                                   |
| Operating pressure   | ≤145 psi                                  |
| Pilot pressure   | 0.2 MPa ... 1 MPa                         |
| Pilot pressure   | 2 bar ... 10 bar                          |
| Pilot pressure   | 29 psi ... 145 psi                        |
| Ambient temperature  | -10 °C ... 60 °C                          |
| Material housing   | PBT                                       |
| Explosion protection   | Zone 2 (ATEX)<br>Zone 22 (ATEX)           |
| Mounting position  | Any                                       |
| Type act., cont. n.-r. func.   | Pneumatic                                 |
| Manual exhaust function  | Non-detenting                             |
| Symbol   | 00991958                                  |
| Operating pressure complete temperature range  | 0.2 bar ... 10 bar                        |
| Standard flow rate in flow control direction 0.6->0 MPa (6->0 bar, 87->0 psi)            | 420 l/min                                 |
| Standard flow rate in non-return direction 0.6->0 MPa (6->0 bar, 87->0 psi) actuated     | 400 l/min ... 460 l/min                   |
| Standard flow rate in non-return direction 0.6->0 MPa (6->0 bar, 87->0 psi) non-actuated | 400 l/min ... 460 l/min                   |
| Standard nominal flow rate in non-return direction actuated                              | 150 l/min ... 230 l/min                   |
| Standard nominal flow rate in non-return direction non-actuated                          | 120 l/min ... 220 l/min                   |
| Switching time off   | 9 ms                                      |
| Switching time on  | 6 ms                                      |
| Operating medium   | Compressed air to ISO 8573-1:2010 [7:4:4] |
| Note on operating and pilot medium   | Lubricated operation possible             |
| LABS (PWIS) conformity   | VDMA24364-B1/B2-L                         |

| <b>Feature</b>                                 | <b>Value</b>                              |
|--|---|
| Storage temperature                            | -20 °C ... 70 °C                          |
| Media temperature                              | -10 °C ... 60 °C                          |
| Pilot medium                                   | Compressed air to ISO 8573-1:2010 [7:4:4] |
| Permissible actuation moment, regulating screw | 1 Nm                                      |
| Product weight                                 | 24.6 g                                    |
| Material covering                              | ES-BE                                     |
| Note on materials                              | RoHS compliant                            |
| Material cover                                 | PBT                                       |
| Material seals                                 | NBR                                       |
| Material sleeve                                | Wrought aluminium alloy                   |
| Material release ring                          | POM                                       |
| Material adjusting screw                       | Brass                                     |