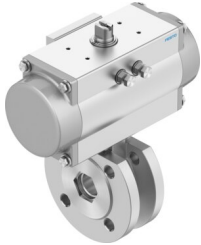


Ball valve unit

VZBC-A-80-FF-16-22-F07-V4V4T-PB480

FESTO

Part number: 8191893



 General operating condition

Data sheet

| Feature | Value |
|---|---|
| Design | 2-way ball valve Quarter turn actuator |
| Type of actuation | Pneumatic |
| Sealing principle | Soft |
| Mounting position | Any |
| Type of mounting | Inline installation |
| Connection Process valve | Flange to EN 1092-1 |
| Switching position indicator | Slot direction = flow direction |
| Flange hole pattern | F07 |
| Nominal size DN | 80 |
| Valve function | 2/2 |
| Flow direction | Reversible |
| Operating pressure | 0.55 MPa ... 0.8 MPa |
| Operating pressure | 5.5 bar ... 8 bar |
| Operating pressure | 79.75 psi ... 116 psi |
| Nominal pressure PN | 16 |
| Breakaway torque at differential pressure, nominal pressure, process valve PN | 117 Nm |
| Based on standard | ISO 5211 |
| Symbol | 00992011 |
| Medium | Compressed air to ISO 8573-1:2010 [-:~:] Inert gases Water – no steam Neutral fluids Other media on request |
| Operating medium | Compressed air to ISO 8573-1:2010 [7:4:4] |
| Note on operating and pilot medium | Lubricated operation possible (in which case lubricated operation will always be required) |
| Media temperature | -10 °C ... 200 °C |
| Flow rate Kv | 905 m ³ /h |
| Max. surface temperature assembly | +105°C...+280°C T4...T2 |
| explosion group assembly | IIC, IIIC |
| Note on materials | RoHS compliant |
| LABS (PWIS) conformity | VDMA24364 zone III |
| Material housing | High-alloy stainless steel |

| Feature | Value |
|--------------------------------|--|
| Material number housing | 1,4408 |
| Material seat seal | PTFE |
| Material seals | PTFE-reinforced |
| Material ball | High-alloy stainless steel |
| Material number ball | 1,4408 |
| Material shaft | High-alloy stainless steel |
| Material number shaft | 1,4401 |
| Product weight | 36810 g |
| Explosion protection | Zone 1 (ATEX) Zone 2 (ATEX) Zone 21 (ATEX) Zone 22 (ATEX) |
| Explosion ambient temperature | -10°C ≤ Ta ≤ +80°C |
| Corrosion resistance class CRC | 1 - Low corrosion stress |