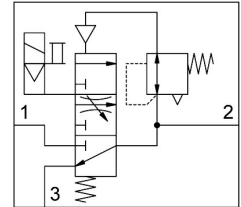


Soft-start valve MS6-EDE-1/2-V24-F1A-B

Part number: 8176513

FESTO



General operating condition

Data sheet

Feature	Value
Size	6
Grid dimension	62 mm
Exhaust-air function	Cannot be throttled
Type of actuation	Electrical
Mounting position	Any
Selection of additional functions	With silencer
Series	MS
Manual override	Detenting Non-detenting
Design	Poppet valve, electrically actuated
Type of reset	Mechanical spring
Type of piloting	Piloted
Pilot air supply	Internal
Symbol	00997398
Valve function	3/2-way, single solenoid, closed
lap	Underlap
Switching position indicator	With accessories
Operating pressure	0.3 MPa ... 0.7 MPa
Operating pressure	3 bar ... 7 bar
b value	0.46
C value	23.9 l/sbar
Standard nominal flow rate, exhaust 0.6->0 MPa (6->0 bar, 87->0 psi)	4000 l/min
Standard nominal flow rate (standardised to DIN 1343)	5000 l/min
Switch-on time	31 ms
Characteristic coil data	24 V DC: 2.3 W
Permissible voltage fluctuations	+/-10%
Operating medium	Compressed air to ISO 8573-1:2010 [7:4:4]
Note on operating and pilot medium	Lubricated operation possible (in which case lubricated operation will always be required)
Corrosion resistance class CRC	1 - Low corrosion stress
LABS (PWIS) conformity	VDMA24364-B1/B2-L
Suitability for the production of Li-ion batteries	Suitable for battery production with reduced Cu/Zn/Ni values (F1a)
Cleanroom suitability, measured according to ISO 14644-14	Class 7 according to ISO 14644-1
Storage temperature	-10 °C ... 60 °C

Feature	Value
Media temperature	-5 °C ... 50 °C
Degree of protection	IP65
Ambient temperature	-5 °C ... 50 °C
Product weight	499 g
Electrical connection	Type C To EN 175301-803
Signal status display	With accessories
Type of mounting	Via wall/surface bracket
Pneumatic connection, port 1	G1/2
Pneumatic connection, port 2	G1/2
Pneumatic connection, port 3	G1/2
Note on materials	RoHS compliant
Material seals	HNBR NBR
Material housing	Reinforced PA