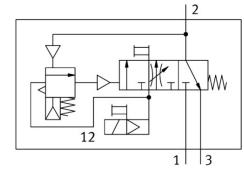


Soft-start/quick exhaust valve MS6-SV-1/2-C-10V24-S-AD7

Part number: 8172785

FESTO



 General operating condition

Data sheet

| Feature | Value |
|----------------------------------------------------------------------|----------------------------------------------------------------------------------------------------------------------------------|
| Series | MS |
| Size | 6 |
| Grid dimension | 62 mm |
| Safety function | Exhaust Prevention of unexpected start-up (pressurisation) |
| Performance Level (PL) | Exhausting/category 1, performance level c Prevention of unexpected start-up (pressurisation)/category 1, performance level c |
| Note on forced dynamization | Switching frequency min. 1/month |
| Design | Piston gate valve |
| lap | Overlap |
| Type of actuation | Electrical |
| Pilot air supply | Internal |
| Sealing principle | Soft |
| Exhaust-air function | Cannot be throttled |
| Manual override | On pilot solenoid valves: non-detenting; on soft-start/quick exhaust valve: detenting, self-resetting |
| Type of reset | Mechanical spring |
| Type of piloting | Piloted |
| Symbol | 00995813 |
| Valve function | 3/2-way, single solenoid, closed Soft-start function |
| Operating pressure | 0.3 MPa ... 1 MPa |
| Operating pressure | 3 bar ... 10 bar |
| Pressure gauge (ANALOG) or Pressure display (DIGITAL) | With pressure sensor with operational status indicator |
| C value | 23.2 l/sbar |
| b value | 0.4 |
| Standard nominal flow rate (standardised to DIN 1343) | 5700 l/min |
| Standard nominal flow rate, exhaust 0.6->0 MPa (6->0 bar, 87->0 psi) | 7600 l/min |
| Switching time off | 65 ms |
| Switching time on | 370 ms |
| Duty cycle | 100% |
| Characteristic coil data | 24 V DC: 1.8 W |
| Permissible voltage fluctuations | +/-10% |
| Operating medium | Compressed air to ISO 8573-1:2010 [7:4:4] |

| Feature | Value |
|----------------------------------------------|--------------------------------------------------------------------------------------------|
| Note on operating and pilot medium | Lubricated operation possible (in which case lubricated operation will always be required) |
| Corrosion resistance class CRC | 2 - Moderate corrosion stress |
| Note on materials | RoHS compliant |
| LABS (PWIS) conformity | VDMA24364-B1/B2-L |
| Degree of protection | IP65 With plug socket |
| Shock resistance | Shock test with severity level 2 to FN 942017-5 and EN 60068-2-27 |
| Vibration resistance | Transport application test with severity level 2 to FN 942017-4 and EN 60068-2-6 |
| CE mark (see declaration of conformity) | To EU EMC Directive To EC Machinery Directive In accordance with EU RoHS Directive |
| UKCA marking (see declaration of conformity) | To UK regulations for machines To UK RoHS instructions |
| Suitable for use with food | See supplementary material information |
| Type of mounting | Either: Inline installation With accessories |
| Mounting position | Any |
| Product weight | 1006 g |
| Pneumatic connection, port 1 | G1/2 |
| Pneumatic connection, port 2 | G1/2 |
| Pneumatic connection, port 3 | G3/4 |
| Electrical connection | 2-pin Type C Plug To EN 175301-803 |
| Material housing | Die-cast aluminium |
| Material seals | NBR |
| Material piston rod | High-alloy stainless steel |