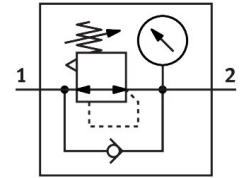



Pressure regulator MS2-LR-QS6-D6-AR-MPA-F1A-B

Part number: 8167262

FESTO



 General operating condition

Data sheet

Feature	Value
Size	2
Series	MS
Actuator lock	Rotary knob with detent
Mounting position	Any
Design	Directly actuated diaphragm regulator
Controller function	Output pressure constant With secondary exhausting With return flow function
Symbol	00991558
Displayable units	MPa
Pressure gauge (ANALOG) or Pressure display (DIGITAL)	With pressure gauge
Operating pressure	0.1 MPa ... 0.8 MPa
Operating pressure	1 bar ... 8 bar
Pressure regulation range	0.5 bar ... 7 bar
Max. pressure hysteresis	0.025 MPa
Max. pressure hysteresis	0.25 bar
Max. pressure hysteresis	3.625 psi
Standard nominal flow rate (standardised to DIN 1343)	350 l/min
Operating medium	Compressed air to ISO 8573-1:2010 [7:4:4] Inert gas
Corrosion resistance class CRC	1 - Low corrosion stress
LABS (PWIS) conformity	VDMA24364-B1/B2-L
Suitability for the production of Li-ion batteries	Suitable for battery production with reduced Cu/Zn/Ni values (F1a)
Cleanroom suitability, measured according to ISO 14644-14	Class 6 according to ISO 14644-1
Storage temperature	-5 °C ... 50 °C
Media temperature	-5 °C ... 50 °C
Ambient temperature	-5 °C ... 50 °C
Product weight	36.1 g
Type of mounting	With accessories
Pneumatic connection, port 1	QS-6
Pneumatic connection, port 2	QS-6
Note on materials	RoHS compliant
Material underneath cover	Process automation
Material seals	NBR
Material rotary knob	POM

Feature	Value
Material spring	High-alloy steel
Material housing	Reinforced PA
Material membrane	NBR
Material valve stem	Wrought aluminium alloy NBR