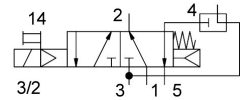
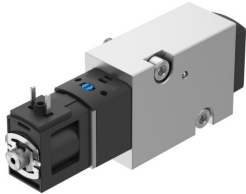



Solenoid valve VSNC-FKA-M32C-RD-G18-1C1-S

FESTO

Part number: 8166612



 [General operating condition](#)

Data sheet

| Feature | Value |
|---|--|
| Valve function | Connections swapped |
| Type of actuation | Electrical |
| Construction width | 25.5 mm |
| Standard nominal flow rate (standardised to DIN 1343) | 400 l/min |
| pneumatic working port | Connection pattern to NAMUR |
| Operating voltage | 24 V DC |
| Operating pressure | 0.25 MPa ... 0.8 MPa |
| Operating pressure | 2.5 bar ... 8 bar |
| Design | Piston slide with sealing ring |
| Type of reset | Mechanical spring Pneumatic spring |
| Degree of protection | IP65 |
| Exhaust-air function | Can be throttled |
| Sealing principle | Soft |
| Mounting position | Any |
| Conforms to standard | VDI/VDE 3845 (NAMUR) |
| Manual override | Detenting |
| Type of piloting | Piloted |
| Pilot air supply | Internal |
| Flow direction | Non-reversible |
| Symbol | 00997365 |
| lap | Overlap |
| b value | 0.3 |
| C value | 2.1 l/sbar |
| Standard nominal flow rate, exhaust return 4→3 | 100 l/min |
| Switching time off | ≤50 ms |
| Switching time on | ≤50 ms |
| Duty cycle | 100% |
| Characteristic coil data | 24 V DC: 2.4 W |
| Operating medium | Compressed air to ISO 8573-1:2010 [7:4:4] |
| Note on operating and pilot medium | Lubricated operation possible (in which case lubricated operation will always be required) |
| Corrosion resistance class CRC | 1 - Low corrosion stress |
| LABS (PWIS) conformity | VDMA24364 zone III |
| Storage temperature | -20 °C ... 60 °C |
| Media temperature | -20 °C ... 50 °C |

| Feature | Value |
|------------------------------|-----------------------------|
| Ambient temperature | -20 °C ... 50 °C |
| Product weight | 220 g |
| Electrical connection | Type C |
| Type of mounting | With through-hole |
| Breather connection | Not ducted |
| Pneumatic connection, port 1 | G1/8 |
| Pneumatic connection, port 2 | Connection pattern to NAMUR |
| Pneumatic connection, port 3 | G1/8 |
| Pneumatic connection, port 4 | Connection pattern to NAMUR |
| Pneumatic connection, port 5 | G1/8 |
| Note on materials | RoHS compliant |
| Material cover | Reinforced PA |
| Material seals | NBR |
| Material housing | Wrought aluminium alloy |
| Manual override material | Reinforced PA |
| Material piston | Wrought aluminium alloy |
| Material screws | High-alloy stainless steel |