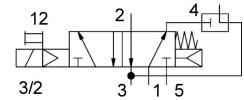
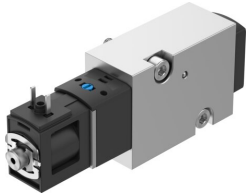


Solenoid valve VSNC-FK-M32C-RD-G18-1C1-S

Part number: 8166611

FESTO



[General operating condition](#)

Data sheet

Feature	Value
Valve function	3/2-way, single solenoid, closed
Type of actuation	Electrical
Construction width	25.5 mm
Standard nominal flow rate (standardised to DIN 1343)	400 l/min
pneumatic working port	Connection pattern to NAMUR
Operating voltage	24 V DC
Operating pressure	0.25 MPa ... 0.8 MPa
Operating pressure	2.5 bar ... 8 bar
Design	Piston slide with sealing ring
Type of reset	Mechanical spring Pneumatic spring
Degree of protection	IP65
Exhaust-air function	Can be throttled
Sealing principle	Soft
Mounting position	Any
Conforms to standard	VDI/VDE 3845 (NAMUR)
Manual override	Detenting
Type of piloting	Piloted
Pilot air supply	Internal
Flow direction	Non-reversible
Symbol	00997362
lap	Overlap
b value	0.3
C value	2.1 l/sbar
Standard nominal flow rate, exhaust return 4→3	100 l/min
Switching time off	≤50 ms
Switching time on	≤50 ms
Duty cycle	100%
Characteristic coil data	24 V DC: 2.4 W
Operating medium	Compressed air to ISO 8573-1:2010 [7:4:4]
Note on operating and pilot medium	Lubricated operation possible (in which case lubricated operation will always be required)
Corrosion resistance class CRC	1 - Low corrosion stress
LABS (PWIS) conformity	VDMA24364 zone III
Storage temperature	-20 °C ... 60 °C
Media temperature	-20 °C ... 50 °C

Feature	Value
Ambient temperature	-20 °C ... 50 °C
Product weight	220 g
Electrical connection	Type C
Type of mounting	With through-hole
Breather connection	Not ducted
Pneumatic connection, port 1	G1/8
Pneumatic connection, port 2	Connection pattern to NAMUR
Pneumatic connection, port 3	G1/8
Pneumatic connection, port 4	Connection pattern to NAMUR
Pneumatic connection, port 5	G1/8
Note on materials	RoHS compliant
Material cover	Reinforced PA
Material seals	NBR
Material housing	Wrought aluminium alloy
Manual override material	Reinforced PA
Material piston	Wrought aluminium alloy
Material screws	High-alloy stainless steel