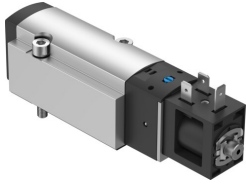


# Solenoid valve

## VSVA-BK-M52-MD-D1-1B2

Part number: 8166594

FESTO



 [General operating condition](#)

## Data sheet

Feature	Value
Valve function	5/2-way, single solenoid
Type of actuation	Electrical
Construction width	38 mm
Valve size	42 mm
Standard nominal flow rate (standardised to DIN 1343)	1200 l/min
pneumatic working port	Sub-base size 1 to ISO 5599-1
Operating voltage	24 V DC
Operating pressure	0.3 MPa ... 0.8 MPa
Operating pressure	3 bar ... 8 bar
Design	Piston slide with sealing ring
Type of reset	Mechanical spring
Degree of protection	IP65 With plug socket To IEC 60529
Nominal size	6.3 mm
Grid dimension	43 mm
Exhaust-air function	Can be throttled
Sealing principle	Soft
Mounting position	Any
Conforms to standard	ISO 5599-1
Manual override	Detenting Non-detenting
ISO code	152
Type of piloting	Piloted
Pilot air supply	Internal
Flow direction	Non-reversible
Symbol	00991003
lap	Underlap
Signal status display	With accessories
b value	0.26
C value	5.88 l/sbar
Flow rate of valve	1343 l/min
Flow rate of valve on individual sub-base	1342 l/min
Flow rate of pneumatically interlinked valve	1313 l/min
Switching time off	20.9 ms
Switching time on	19.9 ms

Feature	Value
Duty cycle	100%
Max. positive test pulse with 0 signal	2500 µs
Max. negative test pulse with 1 signal	1100 µs
Nominal operating voltage DC	24 V
Characteristic coil data	24 V DC: 3.3 W
Permissible voltage fluctuations	+/-10%
Operating medium	Compressed air to ISO 8573-1:2010 [7:4:4]
Note on operating and pilot medium	Lubricated operation possible (in which case lubricated operation will always be required)
Vibration resistance	Transport application test with severity level 2 to FN 942017-4 and EN 60068-2-6
Shock resistance	Shock test with severity level 2 to FN 942017-5 and EN 60068-2-27
Corrosion resistance class CRC	1 - Low corrosion stress
LABS (PWIS) conformity	VDMA24364 zone III
Media temperature	-5 °C ... 50 °C
Pilot medium	Compressed air to ISO 8573-1:2010 [7:4:4]
Ambient temperature	-5 °C ... 50 °C
Max. tightening torque for valve mounting	5 Nm
Product weight	324 g
Electrical connection	Type B To industry standard (11 mm)
Type of mounting	On sub-base
Breather connection	Not ducted
Pneumatic connection, port 1	Sub-base size 1 to ISO 5599-1
Pneumatic connection, port 2	Sub-base size 1 to ISO 5599-1
Pneumatic connection, port 3	Sub-base size 1 to ISO 5599-1
Pneumatic connection, port 4	Sub-base size 1 to ISO 5599-1
Pneumatic connection, port 5	Sub-base size 1 to ISO 5599-1
Note on materials	RoHS compliant
Material seals	HNBR NBR
Material housing	Wrought aluminium alloy
Material piston slide	Wrought aluminium alloy
Material screws	Galvanised steel