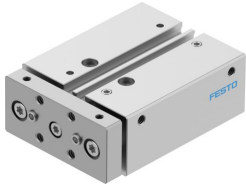


# Guided drive DFM-16-20-B-PPV-A-GF

Part number: 8162429

FESTO



 General operating condition

## Data sheet

| Feature  | Value  |
|--|--|
| Stroke   | 20 mm  |
| Piston diameter  | 16 mm  |
| Operating mode, drive unit                                   | Yoke   |
| Cushioning   | Pneumatic cushioning, adjustable at both ends  |
| Mounting position  | Any  |
| Guide  | Plain-bearing guide  |
| Design   | Guidance   |
| Position detection   | Via proximity switch   |
| Operating pressure   | 0.2 MPa ... 1 MPa  |
| Operating pressure   | 2 bar ... 10 bar   |
| Mode of operation  | Double-acting  |
| Operating medium   | Compressed air to ISO 8573-1:2010 [7:4:4]  |
| Note on operating and pilot medium                           | Lubricated operation possible (in which case lubricated operation will always be required) |
| Corrosion resistance class CRC                               | 2 - Moderate corrosion stress  |
| LABS (PWIS) conformity                                       | VDMA24364-B1/B2-L  |
| Cleanroom suitability, measured according to ISO 14644-14    | Class 6 according to ISO 14644-1   |
| Ambient temperature  | -20 °C ... 80 °C   |
| Impact energy in end positions                               | 0.15 J   |
| Theoretical force at 0.6 MPa (6 bar, 87 psi), return stroke  | 104 N  |
| Theoretical force at 0.6 MPa (6 bar, 87 psi), advance stroke | 121 N  |
| alternative connections                                      | See product drawing  |
| Pneumatic connection   | M5   |
| Note on materials  | RoHS compliant   |
| Material cover   | Wrought aluminium alloy  |
| Material seals   | NBR  |
| Material housing   | Wrought aluminium alloy  |
| Material piston rod  | High-alloy stainless steel   |