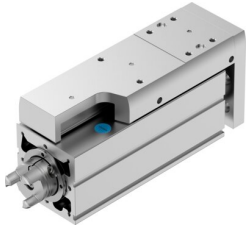


# Mini slide EGSC-BS-KF-60-75-5P

Part number: 8162087

FESTO



[PDF](#) General operating condition

## Data sheet

Feature	Value
Working stroke	75 mm
Size	60
Stroke reserve	0 mm
Reversing backlash theoretical	150 µm
Spindle diameter	12 mm
Spindle pitch	5 mm/U
Mounting position	Any
Guide	Recirculating ball bearing guide
Design	With ball screw
Type of motor	Stepper motor Servo motor
Referencing	Positive fixed stop block Negative fixed stop block Reference switch
Spindle type	Ball screw
Symbol	00992069
Position detection	Via proximity switch
Max. acceleration	5 m/s <sup>2</sup>
Max. rotational speed	3000 rpm
Max. speed	0.25 m/s
Repetition accuracy	±0.015 mm
Duty cycle	100%
Corrosion resistance class CRC	0 - No corrosion stress
LABS (PWIS) conformity	VDMA24364 zone III
Suitability for the production of Li-ion batteries	Suitable for battery production with reduced Cu/Zn/Ni values (F1a)
Cleanroom suitability, measured according to ISO 14644-14	Class 9 according to ISO 14644-1
Sound pressure level	55 dB(A)
Degree of protection	IP40
Ambient temperature	0 °C ... 50 °C
Impact energy in end positions	4.4E-5 J
Note on the impact energy in the end positions	At maximum homing speed of 0.01 m/s
Dynamic basic load rating fixed bearing	13321 N
Dynamic basic load rating linear guide	13400 N
Dynamic basic load rating ball screw	5900 N
Idle torque at v <sub>max</sub>	0.125 Nm
Idle torque at v <sub>min</sub>	0.032 Nm

Feature	Value
Max. force Fy	4937 N
Max. force Fz	4937 N
Fy at theoretical life value of 100 km (only guide consideration)	13400 N
Fz at theoretical life value of 100 km (only guide consideration)	13400 N
Max. moment Mx	20 Nm
Max. moment My	30 Nm
Max. moment Mz	30 Nm
Mx at theoretical life value of 100 km (only guide consideration)	107 Nm
My at theoretical life value of 100 km (only guide consideration)	117 Nm
Mz at theoretical life value of 100 km (only guide consideration)	117 Nm
Max. radial force at drive shaft	230 N
Max. feed force Fx	250 N
Reference value effective load, horizontal	25 kg
Reference value effective load, vertical	25 kg
Static basic load rating ball screw	10600 N
Static basic load rating linear guide	26900 N
Mass moment of inertia JH per metre of stroke	0.11539 kgcm <sup>2</sup>
Mass moment of inertia JL per kg of working load	0.00633 kgcm <sup>2</sup>
Mass moment of inertia JO	0.06624 kgcm <sup>2</sup>
Feed constant	5 mm/U
Static basic load rating fixed bearing	7000 N
Reference service life	5000 km
Maintenance interval	Lifetime lubrication
Moving mass for 0 mm stroke	675 g
Additional moving mass per 10 mm stroke	40 g
Product weight	2267 g
Basic weight for 0 mm stroke	1555 g
Additional weight per 10 mm stroke	95 g
Type of mounting	With female thread With centring sleeve With accessories Via cylindrical dowel pin
Interface code, actuator	T42
Note on materials	RoHS compliant
Material guide slide	Bearing steel
Material guide rail	Bearing steel
Material housing	Anodised wrought aluminium alloy
Material yoke plate	Anodised wrought aluminium alloy
Material piston rod	High-alloy stainless steel
Material slide	Anodised wrought aluminium alloy
Material ball screw nut	Bearing steel
Material spindle	Bearing steel