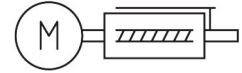
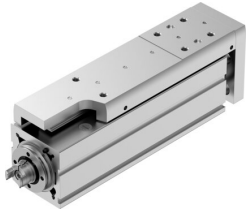


Mini slide EGSC-BS-KF-45-100-3P

Part number: 8162076

FESTO



[PDF](#) General operating condition

Data sheet

| Feature | Value |
|---|--|
| Working stroke | 100 mm |
| Size | 45 |
| Stroke reserve | 0 mm |
| Reversing backlash theoretical | 150 µm |
| Spindle diameter | 10 mm |
| Spindle pitch | 3 mm/U |
| Mounting position | Any |
| Guide | Recirculating ball bearing guide |
| Design | With ball screw |
| Type of motor | Stepper motor Servo motor |
| Referencing | Positive fixed stop block Negative fixed stop block Reference switch |
| Spindle type | Ball screw |
| Symbol | 00992069 |
| Position detection | Via proximity switch |
| Max. acceleration | 5 m/s ² |
| Max. rotational speed | 3600 rpm |
| Max. speed | 0.18 m/s |
| Repetition accuracy | ±0.015 mm |
| Duty cycle | 100% |
| Corrosion resistance class CRC | 0 - No corrosion stress |
| LABS (PWIS) conformity | VDMA24364 zone III |
| Suitability for the production of Li-ion batteries | Suitable for battery production with reduced Cu/Zn/Ni values (F1a) |
| Cleanroom suitability, measured according to ISO 14644-14 | Class 9 according to ISO 14644-1 |
| Sound pressure level | 55 dB(A) |
| Degree of protection | IP40 |
| Ambient temperature | 0 °C ... 50 °C |
| Impact energy in end positions | 1.4E-5 J |
| Note on the impact energy in the end positions | At maximum homing speed of 0.01 m/s |
| Dynamic basic load rating fixed bearing | 7413 N |
| Dynamic basic load rating linear guide | 3240 N |
| Dynamic basic load rating ball screw | 3500 N |
| Idle torque at v _{max} | 0.059 Nm |
| Idle torque at v _{min} | 0.015 Nm |

| Feature | Value |
|---|---|
| Max. force Fy | 1314 N |
| Max. force Fz | 1314 N |
| Fy at theoretical life value of 100 km (only guide consideration) | 3240 N |
| Fz at theoretical life value of 100 km (only guide consideration) | 3240 N |
| Max. moment Mx | 8.1 Nm |
| Max. moment My | 7 Nm |
| Max. moment Mz | 7 Nm |
| Mx at theoretical life value of 100 km (only guide consideration) | 20 Nm |
| My at theoretical life value of 100 km (only guide consideration) | 17 Nm |
| Mz at theoretical life value of 100 km (only guide consideration) | 17 Nm |
| Max. radial force at drive shaft | 180 N |
| Max. feed force Fx | 120 N |
| Reference value effective load, horizontal | 12 kg |
| Reference value effective load, vertical | 12 kg |
| Static basic load rating ball screw | 6300 N |
| Static basic load rating linear guide | 5630 N |
| Mass moment of inertia JH per metre of stroke | 0.04918 kgcm ² |
| Mass moment of inertia JL per kg of working load | 0.0028 kgcm ² |
| Mass moment of inertia JO | 0.01045 kgcm ² |
| Feed constant | 3 mm/U |
| Static basic load rating fixed bearing | 3966 N |
| Reference service life | 5000 km |
| Maintenance interval | Lifetime lubrication |
| Moving mass for 0 mm stroke | 212 g |
| Additional moving mass per 10 mm stroke | 30 g |
| Product weight | 1237 g |
| Basic weight for 0 mm stroke | 608 g |
| Additional weight per 10 mm stroke | 63 g |
| Type of mounting | With female thread With centring sleeve With accessories Via cylindrical dowel pin |
| Interface code, actuator | V32 |
| Note on materials | RoHS compliant |
| Material guide slide | Bearing steel |
| Material guide rail | Bearing steel |
| Material housing | Anodised wrought aluminium alloy |
| Material yoke plate | Anodised wrought aluminium alloy |
| Material piston rod | High-alloy stainless steel |
| Material slide | Anodised wrought aluminium alloy |
| Material ball screw nut | Bearing steel |
| Material spindle | Bearing steel |