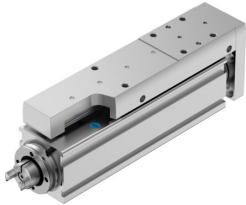


Mini slide EGSC-BS-KF-25-50-2P

Part number: 8162070

FESTO



[PDF](#) General operating condition

Data sheet

Feature	Value
Working stroke	50 mm
Size	25
Stroke reserve	0 mm
Reversing backlash theoretical	150 µm
Spindle diameter	6 mm
Spindle pitch	2 mm/U
Mounting position	Any
Guide	Recirculating ball bearing guide
Design	With ball screw
Type of motor	Stepper motor Servo motor
Referencing	Positive fixed stop block Negative fixed stop block Reference switch
Spindle type	Ball screw
Symbol	00992069
Position detection	Via proximity switch
Max. acceleration	5 m/s ²
Max. rotational speed	4000 rpm
Max. speed	0.133 m/s
Repetition accuracy	±0.015 mm
Duty cycle	100%
Corrosion resistance class CRC	0 - No corrosion stress
LABS (PWIS) conformity	VDMA24364 zone III
Suitability for the production of Li-ion batteries	Suitable for battery production with reduced Cu/Zn/Ni values (F1a)
Cleanroom suitability, measured according to ISO 14644-14	Class 9 according to ISO 14644-1
Sound pressure level	45 dB(A)
Degree of protection	IP40
Ambient temperature	0 °C ... 50 °C
Impact energy in end positions	5.0E-6 J
Note on the impact energy in the end positions	At maximum homing speed of 0.01 m/s
Dynamic basic load rating fixed bearing	2810 N
Dynamic basic load rating linear guide	1310 N
Dynamic basic load rating ball screw	1900 N
Idle torque at v _{max}	0.015 Nm
Idle torque at v _{min}	0.005 Nm

Feature	Value
Max. force Fy	669 N
Max. force Fz	669 N
Fy at theoretical life value of 100 km (only guide consideration)	1310 N
Fz at theoretical life value of 100 km (only guide consideration)	1310 N
Max. moment Mx	2 Nm
Max. moment My	2.1 Nm
Max. moment Mz	2.1 Nm
Mx at theoretical life value of 100 km (only guide consideration)	5 Nm
My at theoretical life value of 100 km (only guide consideration)	4 Nm
Mz at theoretical life value of 100 km (only guide consideration)	4 Nm
Max. radial force at drive shaft	30 N
Max. feed force Fx	20 N
Reference value effective load, horizontal	2 kg
Reference value effective load, vertical	2 kg
Static basic load rating ball screw	2800 N
Static basic load rating linear guide	2440 N
Mass moment of inertia JH per metre of stroke	0.00529 kgcm ²
Mass moment of inertia JL per kg of working load	0.00101 kgcm ²
Mass moment of inertia JO	8.7E-4 kgcm ²
Feed constant	2 mm/U
Static basic load rating fixed bearing	1340 N
Reference service life	5000 km
Maintenance interval	Lifetime lubrication
Moving mass for 0 mm stroke	83 g
Additional moving mass per 10 mm stroke	9 g
Product weight	269 g
Basic weight for 0 mm stroke	176 g
Additional weight per 10 mm stroke	19 g
Type of mounting	With female thread With centring sleeve With accessories Via cylindrical dowel pin
Interface code, actuator	V20
Note on materials	RoHS compliant
Material guide slide	Bearing steel
Material guide rail	Bearing steel
Material housing	Anodised wrought aluminium alloy
Material yoke plate	Anodised wrought aluminium alloy
Material piston rod	High-alloy stainless steel
Material slide	Anodised wrought aluminium alloy
Material ball screw nut	Bearing steel
Material spindle	Bearing steel