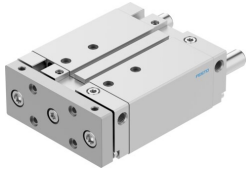


Guided drive DFM-50-80-B-PPV-A-KF

Part number: 8161449

FESTO



 General operating condition

Data sheet

Feature	Value
Stroke	80 mm
Piston diameter	50 mm
Operating mode, drive unit	Yoke
Cushioning	Pneumatic cushioning, adjustable at both ends
Mounting position	Any
Guide	Recirculating ball bearing guide
Design	Guidance
Position detection	Via proximity switch
Operating pressure	0.1 MPa ... 1 MPa
Operating pressure	1 bar ... 10 bar
Mode of operation	Double-acting
Operating medium	Compressed air to ISO 8573-1:2010 [7:4:4]
Note on operating and pilot medium	Lubricated operation possible (in which case lubricated operation will always be required)
Corrosion resistance class CRC	0 - No corrosion stress
LABS (PWIS) conformity	VDMA24364-B1/B2-L
Cleanroom suitability, measured according to ISO 14644-14	Class 6 according to ISO 14644-1
Ambient temperature	-5 °C ... 60 °C
Impact energy in end positions	1 J
Theoretical force at 0.6 MPa (6 bar, 87 psi), return stroke	1057 N
Theoretical force at 0.6 MPa (6 bar, 87 psi), advance stroke	1178 N
alternative connections	See product drawing
Pneumatic connection	G1/4
Note on materials	RoHS compliant
Material cover	Wrought aluminium alloy
Material seals	NBR
Material housing	Wrought aluminium alloy
Material piston rod	High-alloy stainless steel