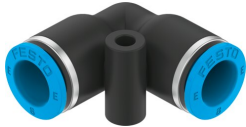


# Push-in L-connector NPQE-L-Q8-E-F1A-P10

Part number: 8158798

FESTO



 General operating condition

## Data sheet

| Feature   | Value  |
|---|--|
| Size  | Standard   |
| Nominal size  | 7.1 mm   |
| Mounting position   | Any  |
| Design  | L-shape  |
| Size of pack  | 10   |
| Design  | Push-pull principle  |
| Variants  | Metals with copper, zinc or nickel by mass as main constituent are excluded from use. Exceptions are nickel in steel, chemically nickel-plated surfaces, printed circuit boards, cables, electrical plug connectors and coils. |
| Operating pressure complete temperature range             | -0.095 MPa ... 0.8 MPa   |
| Operating pressure complete temperature range             | -0.95 bar ... 8 bar  |
| Operating pressure complete temperature range             | -13.775 psi ... 116 psi  |
| Operating medium  | Compressed air to ISO 8573-1:2010 [7:4:4]  |
| Note on operating and pilot medium                        | Lubricated operation possible  |
| Corrosion resistance class CRC                            | 1 - Low corrosion stress   |
| LABS (PWIS) conformity                                    | VDMA24364 zone III   |
| Suitability for the production of Li-ion batteries        | Suitable for battery production with reduced Cu/Zn/Ni values (F1a)   |
| Cleanroom suitability, measured according to ISO 14644-14 | Class 4 according to ISO 14644-1   |
| Ambient temperature                                       | -5 °C ... 60 °C  |
| Product weight  | 5.38 g   |
| Pneumatic connection, port 1                              | For tubing outer diameter of 8 mm  |
| Pneumatic connection, port 2                              | For tubing outside diameter of 8 mm  |
| Colour of release ring                                    | Blue   |
| Note on materials   | RoHS compliant   |
| Material housing  | PBT  |
| Material release ring                                     | POM  |
| Material tubing seal                                      | NBR  |
| Material tubing clamp component                           | High-alloy stainless steel   |