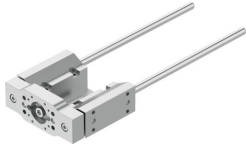


# Guide unit EAGF-P2-KF-45-300

Part number: 8158130

FESTO



 General operating condition

## Data sheet

| Feature   | Value                                |
|---|--------------------------------------|
| Size  | 45                                   |
| Stroke  | 300 mm                               |
| Reversing backlash theoretical                        | 0 µm                                 |
| Mounting position                                     | Any                                  |
| Guide   | Recirculating ball bearing guide     |
| Design  | Guidance                             |
| Max. acceleration                                     | 25 m/s <sup>2</sup>                  |
| Max. speed  | 1 m/s                                |
| Corrosion resistance class CRC                        | 0 - No corrosion stress              |
| LABS (PWIS) conformity                                | VDMA24364 zone III                   |
| Degree of protection                                  | IP40                                 |
| Ambient temperature                                   | 0 °C ... 60 °C                       |
| Max. force F <sub>y</sub>                             | 320 N                                |
| Max. force F <sub>y</sub> static                      | 415 N                                |
| Max. force F <sub>z</sub>                             | 320 N                                |
| Max. force F <sub>z</sub> static                      | 415 N                                |
| Max. moment M <sub>x</sub>                            | 15 Nm                                |
| Max. torque M <sub>x</sub> static                     | 19 Nm                                |
| Max. moment M <sub>y</sub>                            | 10 Nm                                |
| Max. torque M <sub>y</sub> static                     | 12 Nm                                |
| Max. moment M <sub>z</sub>                            | 10 Nm                                |
| Max. torque M <sub>z</sub> static                     | 12 Nm                                |
| Displacement force                                    | 2 N                                  |
| Moving mass for 0 mm stroke                           | 342 g                                |
| Basic weight for 0 mm stroke                          | 1037 g                               |
| Additional weight per 10 mm stroke                    | 12.3 g                               |
| Additional moving mass per 10 mm stroke               | 12.3 g                               |
| Centre of gravity at 0 mm stroke                      | 25 mm                                |
| Centre of gravity additional of moving mass per 10 mm | 4.3 mm                               |
| Type of mounting                                      | With female thread                   |
| Note on materials                                     | RoHS compliant                       |
| Material guide component                              | Tempered steel<br>Hard chrome-plated |
| Material housing                                      | anodised                             |
| Material yoke plate                                   | Wrought aluminium alloy<br>anodised  |