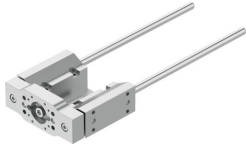


# Guide unit EAGF-P2-KF-45-150

Part number: 8158125

FESTO



 General operating condition

## Data sheet

Feature	Value
Size	45
Stroke	150 mm
Reversing backlash theoretical	0 µm
Mounting position	Any
Guide	Recirculating ball bearing guide
Design	Guidance
Max. acceleration	25 m/s <sup>2</sup>
Max. speed	1 m/s
Corrosion resistance class CRC	0 - No corrosion stress
LABS (PWIS) conformity	VDMA24364 zone III
Degree of protection	IP40
Ambient temperature	0 °C ... 60 °C
Max. force F <sub>y</sub>	320 N
Max. force F <sub>y</sub> static	415 N
Max. force F <sub>z</sub>	320 N
Max. force F <sub>z</sub> static	415 N
Max. moment M <sub>x</sub>	15 Nm
Max. torque M <sub>x</sub> static	19 Nm
Max. moment M <sub>y</sub>	10 Nm
Max. torque M <sub>y</sub> static	12 Nm
Max. moment M <sub>z</sub>	10 Nm
Max. torque M <sub>z</sub> static	12 Nm
Displacement force	2 N
Moving mass for 0 mm stroke	342 g
Basic weight for 0 mm stroke	1037 g
Additional weight per 10 mm stroke	12.3 g
Additional moving mass per 10 mm stroke	12.3 g
Centre of gravity at 0 mm stroke	25 mm
Centre of gravity additional of moving mass per 10 mm	4.3 mm
Type of mounting	With female thread
Note on materials	RoHS compliant
Material guide component	Tempered steel Hard chrome-plated
Material housing	anodised
Material yoke plate	Wrought aluminium alloy anodised