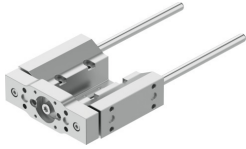


# Guide unit EAGF-P2-KF-32-50

Part number: 8158032

FESTO



 General operating condition

## Data sheet

Feature	Value
Size	32
Stroke	50 mm
Reversing backlash theoretical	0 µm
Mounting position	Any
Guide	Recirculating ball bearing guide
Design	Guidance
Max. acceleration	25 m/s <sup>2</sup>
Max. speed	1 m/s
Corrosion resistance class CRC	0 - No corrosion stress
LABS (PWIS) conformity	VDMA24364 zone III
Degree of protection	IP40
Ambient temperature	0 °C ... 60 °C
Max. force F <sub>y</sub>	160 N
Max. force F <sub>y</sub> static	355 N
Max. force F <sub>z</sub>	160 N
Max. force F <sub>z</sub> static	355 N
Max. moment M <sub>x</sub>	6 Nm
Max. torque M <sub>x</sub> static	13 Nm
Max. moment M <sub>y</sub>	4 Nm
Max. torque M <sub>y</sub> static	9 Nm
Max. moment M <sub>z</sub>	4 Nm
Max. torque M <sub>z</sub> static	9 Nm
Displacement force	1.6 N
Moving mass for 0 mm stroke	170 g
Basic weight for 0 mm stroke	613 g
Additional weight per 10 mm stroke	7.9 g
Additional moving mass per 10 mm stroke	7.9 g
Centre of gravity at 0 mm stroke	26 mm
Centre of gravity additional of moving mass per 10 mm	4.3 mm
Type of mounting	With female thread
Note on materials	RoHS compliant
Material guide component	Tempered steel Hard chrome-plated
Material housing	anodised
Material yoke plate	Wrought aluminium alloy anodised