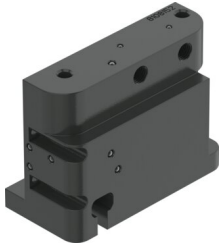


Manifold block CAPS-M1-VDE2-S-A-AL-N14-V

Part number: 8154591

FESTO



 [General operating condition](#)

Data sheet

Feature	Value
Dimensions (W x L x H)	80 mm x 104 mm x 50 mm
Mode of operation	Single-acting
Design characteristics	Safety pneumatic output 2 exhausted
Standard nominal flow rate (standardised to DIN 1343)	320 l/min
LABS (PWIS) conformity	VDMA24364 zone III
Product weight	650 g
Type of mounting	To VDI/VDE 3847-2
Pneumatic connection	1/4 NPT
Note on materials	RoHS compliant
Material screws	High-alloy stainless steel
Material housing	Aluminium, powder-coated