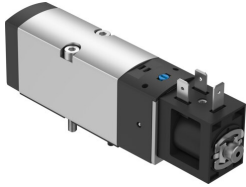


# Solenoid valve VSVA-BK-M52-MD-A1-1B2

Part number: 8150869

FESTO



[General operating condition](#)

## Data sheet

Feature	Value
Valve function	5/2-way, single solenoid
Type of actuation	Electrical
Valve size	26 mm
Standard nominal flow rate (standardised to DIN 1343)	900 l/min
pneumatic working port	Sub-base size 26 mm to ISO 15407-1
Operating voltage	24 V DC
Operating pressure	0.3 MPa ... 0.8 MPa
Operating pressure	3 bar ... 8 bar
Design	Piston slide with sealing ring
Type of reset	Mechanical spring
Degree of protection	IP65 With plug socket To IEC 60529
Nominal size	6.4 mm
Exhaust-air function	Can be throttled
Sealing principle	Soft
Mounting position	Any
Conforms to standard	ISO 15407-1
Manual override	Detenting Non-detenting
Type of piloting	Piloted
Pilot air supply	Internal
Flow direction	Non-reversible
Symbol	00991003
lap	Underlap
Signal status display	With accessories
b value	0.29
C value	3.98 l/sbar
Flow rate of valve	915 l/min
Flow rate of valve on individual sub-base	915 l/min
Flow rate of pneumatically interlinked valve	880 l/min
Switching time off	22.8 ms
Switching time on	16.2 ms
Duty cycle	100%
Max. positive test pulse with 0 signal	2500 µs
Max. negative test pulse with 1 signal	1100 µs

Feature	Value
Nominal operating voltage DC	24 V
Characteristic coil data	24 V DC: 3.3 W
Permissible voltage fluctuations	+/-10%
Operating medium	Compressed air to ISO 8573-1:2010 [7:4:4]
Note on operating and pilot medium	Lubricated operation possible (in which case lubricated operation will always be required)
Vibration resistance	Transport application test with severity level 2 to FN 942017-4 and EN 60068-2-6
Shock resistance	Shock test with severity level 2 to FN 942017-5 and EN 60068-2-27
Corrosion resistance class CRC	1 - Low corrosion stress
LABS (PWIS) conformity	VDMA24364 zone III
Media temperature	-5 °C ... 50 °C
Pilot medium	Compressed air to ISO 8573-1:2010 [7:4:4]
Ambient temperature	-5 °C ... 50 °C
Max. tightening torque for valve mounting	2.4 Nm
Product weight	242 g
Electrical connection	Type B To industry standard (11 mm)
Type of mounting	On sub-base
Breather connection	Not ducted
Pneumatic connection, port 1	Sub-base size 26 mm to ISO 15407-1
Pneumatic connection, port 2	Sub-base size 26 mm to ISO 15407-1
Pneumatic connection, port 3	Sub-base size 26 mm to ISO 15407-1
Pneumatic connection, port 4	Sub-base size 26 mm to ISO 15407-1
Pneumatic connection, port 5	Sub-base size 26 mm to ISO 15407-1
Note on materials	RoHS compliant
Material seals	HNBR NBR
Material housing	Wrought aluminium alloy
Material piston slide	Wrought aluminium alloy
Material screws	Galvanised steel