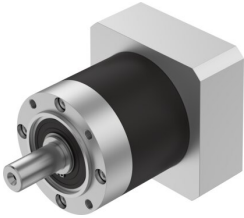


# Gear unit EMGA-120-P-G12-SAS-140

Part number: 8141760

FESTO



 [General operating condition](#)

## Data sheet

Feature	Value
Gear unit flange size	120 mm
Motor flange size	140 mm
Torsional backlash	0.15 deg
Type of gear unit	Planetary gear set
Gear unit ratio	12:1
Max. drive speed	6500 rpm
Operating temperature of gear unit	-25 °C ... 90 °C
LABS (PWIS) conformity	VDMA24364-B2-L
Degree of protection	IP54
Continuous output torque	260 Nm
Mass moment of inertia of gear unit	2.224 kgcm <sup>2</sup>
Max. output torque	520 Nm
Max. efficiency	96 %
Torsional rigidity	22 Nm/arcmin
Product weight	9000 g
Gear unit interface, output shaft	120G
Gear unit interface, drive shaft	140A
Note on materials	RoHS compliant