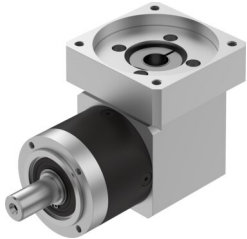


Gear unit EMGA-80-A-G8-100A

Part number: 8141747

FESTO



 [General operating condition](#)

Data sheet

Feature	Value
Gear unit flange size	80 mm
Motor flange size	100 mm
Torsional backlash	0.22 deg
Type of gear unit	Right-angle gear unit
Gear unit ratio	8:1
Max. drive speed	7000 rpm
Operating temperature of gear unit	-25 °C ... 90 °C
LABS (PWIS) conformity	VDMA24364-B2-L
Degree of protection	IP54
Continuous output torque	50 Nm
Mass moment of inertia of gear unit	0.934 kgcm ²
Max. output torque	190 Nm
Max. efficiency	94 %
Torsional rigidity	4.2 Nm/arcmin
Product weight	4500 g
Permissible axial shaft load	1000 N
Permissible radial shaft load	750 N
Gear unit interface, output shaft	80G
Gear unit interface, drive shaft	100A
Note on materials	RoHS compliant