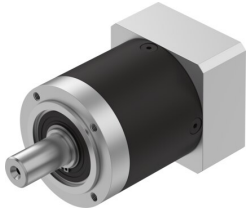


Gear unit EMGA-80-P-G12-EAS-80

Part number: 8141742

FESTO



 [General operating condition](#)

Data sheet

Feature	Value
Gear unit flange size	80 mm
Motor flange size	80 mm
Torsional backlash	0.15 deg
Type of gear unit	Planetary gear set
Gear unit ratio	12:1
Max. drive speed	7000 rpm
Operating temperature of gear unit	-25 °C ... 90 °C
LABS (PWIS) conformity	VDMA24364-B2-L
Degree of protection	IP54
Continuous output torque	120 Nm
Mass moment of inertia of gear unit	0.589 kgcm ²
Max. output torque	240 Nm
Max. efficiency	97 %
Torsional rigidity	10.2 Nm/arcmin
Product weight	2500 g
Permissible axial shaft load	1000 N
Permissible radial shaft load	750 N
Gear unit interface, output shaft	80G
Gear unit interface, drive shaft	80P
Note on materials	RoHS compliant