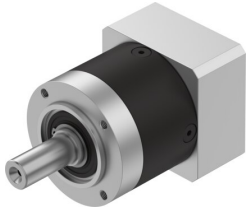


Gear unit EMGA-60-P-G8-EAS-60

Part number: 8141735

FESTO



 [General operating condition](#)

Data sheet

Feature	Value
Gear unit flange size	60 mm
Motor flange size	60 mm
Torsional backlash	0.17 deg
Type of gear unit	Planetary gear set
Gear unit ratio	8:1
Max. drive speed	13000 rpm
Operating temperature of gear unit	-25 °C ... 90 °C
LABS (PWIS) conformity	VDMA24364-B2-L
Degree of protection	IP54
Continuous output torque	18 Nm
Mass moment of inertia of gear unit	0.088 kgcm ²
Max. output torque	29 Nm
Max. efficiency	97 %
Torsional rigidity	2.4 Nm/arcmin
Product weight	900 g
Permissible axial shaft load	500 N
Permissible radial shaft load	400 N
Gear unit interface, output shaft	60H
Gear unit interface, drive shaft	60P
Note on materials	RoHS compliant