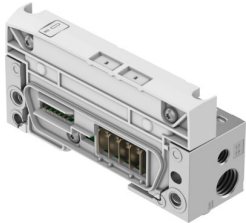


Pneumatic interface VMPA-AP-EPL-G

Part number: 8137156

FESTO



 General operating condition

Data sheet

Feature	Value
Width	34.1 mm
Length	107.3 mm
Vibration resistance	Transport application test with severity level 2 to FN 942017-4 and EN 60068-2-6
Note on vibration resistance	SG2 on wall mounting
Shock resistance	Shock test with severity level 2 to FN 942017-5 and EN 60068-2-27
Note on shock resistance	SG2 on wall mounting
Valve terminal interface	Type 32, MPA-FB-AP-VI
Reverse polarity protection	Yes
Note on reverse polarity protection	Self-protection
Mounting position	Any, on H-rail: horizontal
Diagnostics via LED	Diagnostics per module
Diagnostics per internal communication	Communication error Electronics/sensors overvoltage Electronics/sensors undervoltage
Integrated function	Flat plate silencer Ducted exhaust air
Pilot air supply	Internal
Module code (hex/dec)	0x3052/12370d
Internal cycle time	1 ms
Dimensions (W x L x H)	34.1 mm x 107.3 mm x 55.1 mm
Fuse protection (short circuit)	Additional fuse
Intrinsic current consumption at nominal operating voltage for electronics/sensors	Typically 35 mA
Note regarding operating voltage	SELV/PELV fixed power supplies required Note the voltage drop
Nominal DC operating voltage, electronics/sensors	24 V
Nominal operating voltage DC of load	24 V
Power failure bridging	10 ms
Potential separation between the supply voltages electronics/sensor technology and load/valves	Yes
Pollution degree	2
Permissible voltage fluctuations for electronics/sensors	±25%
Permissible voltage fluctuation of load	±25%
Corrosion resistance class CRC	1 - Low corrosion stress
LABS (PWIS) conformity	VDMA24364-B2-L
Storage temperature	-20 °C ... 70 °C

Feature	Value
Relative air humidity	5 - 95% Non-condensing
Degree of protection	IP65 IP67
Note on degree of protection	In mounted state
Protection class	III
Overvoltage category	II
Ambient temperature	-20 °C ... 50 °C
Note on ambient temperature	Observe ambient temperature derating according to IEC 61131-2:2017
Nominal altitude of use	≤ 2000 m ASL (> 79.5 kPa)
Max. installation height	3500 m
Note on max. installation height	> 2000 m ASL (< 79.5 kPa) Observe ambient temperature derating according to IEC 61131-2:2017
Product weight	207 g
Electrical control	AP interface
Communication interface, protocol	AP
Type of mounting	Via through-hole for M4 screw
Pilot air port 12/14	M7
Pneumatic connection, port 1	G1/4
Note on materials	RoHS compliant
Material cover	Reinforced PBT
Material seals	Polyurethane foam
Material housing	Die-cast aluminium
Material screws	Galvanised steel