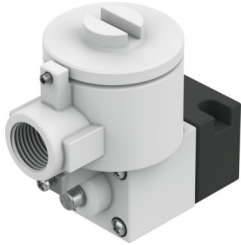


Pilot valve MGXDH-3/2-1.2-110AC-KS

Part number: 8118343

FESTO



 [General operating condition](#)

Data sheet

Feature	Value
Valve function	3/2-way, single solenoid, closed
Type of actuation	Electrical
Operating pressure	-0.09 MPa ... 0.8 MPa
Operating pressure	-0.9 bar ... 8 bar
Operating pressure	-13.05 psi ... 116 psi
Design	On/off valve
Type of reset	Mechanical spring
Certificate issuing authority	21-GA4BO-0068X 21-GA4BO-0069X
Explosion ignition protection type for gas	Ex db IIC T6...T3 Gb
Explosion ignition protection type for dust	Ex tb IIIC T85°C Db
Explosion ambient temperature	-65°C ~+40°C T4 -65°C ~+55°C T3
Degree of protection	IP66
Manual override	Detenting
Flow direction	Non-reversible
Symbol	00991308
Duty cycle	100%
Insulation material class	H
Characteristic coil data	110 V AC: 50/60 Hz, initial power: 79.5 VA, holding power: 3.8 VA
Permissible frequency fluctuations	+/-10%
Operating medium	Compressed air to ISO 8573-1:2010 [7:4:4]
Note on operating and pilot medium	Lubricated operation possible (in which case lubricated operation will always be required)
Corrosion resistance class CRC	2 - Moderate corrosion stress
LABS (PWIS) conformity	VDMA24364 zone III
Ambient temperature	-20 °C ... 80 °C
Type of mounting	CNOMO
Note on materials	RoHS compliant