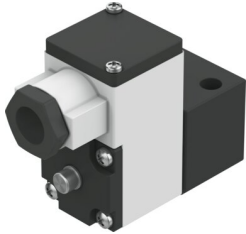


Pilot valve MGXIAH-3/2-0.8-24DC-KS

Part number: 8118341

FESTO



[General operating condition](#)

Data sheet

Feature	Value
Valve function	3/2-way, single solenoid, closed
Type of actuation	Electrical
Operating pressure	-0.09 MPa ... 0.8 MPa
Operating pressure	-0.9 bar ... 8 bar
Operating pressure	-13.05 psi ... 116 psi
Design	On/off valve
Type of reset	Mechanical spring
Certificate issuing authority	21-GA4BO-0070X 21-GA4BO-0071X
Explosion ignition protection type for gas	Ex ia IIC T6 ... T5 Gb
Explosion ignition protection type for dust	Ex ia IIIC T135°C Db
Explosion ambient temperature	-40 °C ≤ Ta ≤ 50 °C / 65 °C
Degree of protection	IP65
Manual override	Detenting
Flow direction	Non-reversible
Symbol	00991308
Duty cycle	100%
Insulation material class	H
Max. input power Pi	-55°C ~ +50°C T6 = 2.98W -55°C ~ +65°C T5 = 1W -55°C ~ +65°C T5 = 2.98W -55°C ~ +65°C T6 = 1W
Max. input voltage Ui	31 V
Max. input current Ii	0.67 A
Characteristic coil data	24 V DC: 1.5 W
Effective internal inductivity Li	Negligibly low
Effective internal capacitance Ci	Negligibly low
Permissible frequency fluctuations	+/-10%
Operating medium	Compressed air to ISO 8573-1:2010 [7:4:4]
Note on operating and pilot medium	Lubricated operation possible (in which case lubricated operation will always be required)
Corrosion resistance class CRC	2 - Moderate corrosion stress
LABS (PWIS) conformity	VDMA24364 zone III
Ambient temperature	-20 °C ... 80 °C
Type of mounting	CNOMO
Note on materials	RoHS compliant