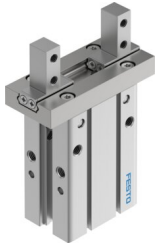


# Parallel gripper DHPC-L-25-A-NO-S-1

Part number: 8116874

FESTO



 [General operating condition](#)

## Data sheet

| Feature   | Value   |
|---|---|
| Size  | 25  |
| Stroke per gripper jaws   | 11 mm   |
| Max. replacement accuracy                                       | 0.2 mm  |
| Max. angular gripper jaw backlash ax, ay                        | 0 deg   |
| Max. gripper jaw backlash Sz                                    | 0 mm  |
| Rotationally symmetrical  | ≤0.2 mm   |
| Repetition accuracy, gripper                                    | ≤0.02 mm  |
| Number of gripper jaws  | 2   |
| Drive system  | Pneumatic   |
| Mounting position   | Any   |
| Mode of operation   | Single-acting<br>Open   |
| Gripper function  | Parallel  |
| Gripper force back-up   | During opening  |
| Design  | Connection direction on the side<br>Lever<br>Side mounting method for gripper fingers<br>Force pilot operated motion sequence |
| Guide   | Ball guide  |
| Position detection  | Via proximity switch  |
| Symbol  | 00997349  |
| Operating pressure  | 0.25 MPa ... 0.8 MPa  |
| Operating pressure  | 2.5 bar ... 8 bar   |
| Operating pressure  | 36.25 psi ... 116 psi   |
| Max. operating frequency of gripper                             | 3 Hz  |
| Min. opening time at 0.6 MPa (6 bar, 87 psi)                    | 171 ms  |
| Min. closing time at 0.6 MPa (6 bar, 87 psi)                    | 46 ms   |
| Max. mass per external gripper finger                           | 160 g   |
| Operating medium  | Compressed air to ISO 8573-1:2010 [7:4:4]   |
| Note on operating and pilot medium                              | Lubricated operation possible (in which case lubricated operation will always be required)                                    |
| Corrosion resistance class CRC                                  | 0 - No corrosion stress   |
| LABS (PWIS) conformity  | VDMA24364-B2-L  |
| Suitability for the production of Li-ion batteries              | Suitable for battery production with reduced Cu/Zn/Ni values (F1a)  |
| Ambient temperature   | -10 °C ... 60 °C  |
| Total gripping force, closing, 0.6MPa (6bar, 87 psi)            | 241.3 N   |
| Gripper force per gripper jaw, closing, 0.6 MPa (6 bar, 87 psi) | 120.6 N   |

| Feature                             | Value   |
|-------------------------------------|---|
| Mass moment of inertia              | 2.18 kgcm <sup>2</sup>  |
| Max. force on gripper jaw Fz static | 155.9 N   |
| Max. torque at gripper Mx static    | 4.83 Nm   |
| Max. torque at gripper My static    | 2.52 Nm   |
| Max. torque at gripper Mz static    | 2.52 Nm   |
| Product weight                      | 495 g   |
| Type of mounting                    | Either:<br>Direct mounting via through-hole<br>Direct mounting via thread<br>On mounting frame<br>Via through-hole and dowel pin<br>Via female thread and dowel pin |
| Pneumatic connection                | M5  |
| Note on materials                   | RoHS compliant  |
| Material housing                    | Anodised aluminium  |
| Material gripper jaws               | High-alloy stainless steel  |