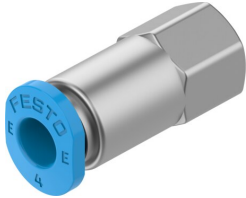


Push-in fitting NPQE-D-M5F-Q4-P10

Part number: 8112985

FESTO



 General operating condition

Data sheet

Feature	Value
Size	Mini
Nominal size	2.5 mm
Mounting position	Any
Design	Straight design
Size of pack	10
Design	Push-pull principle
Operating pressure complete temperature range	-0.095 MPa ... 0.8 MPa
Operating pressure complete temperature range	-0.95 bar ... 8 bar
Operating pressure complete temperature range	-13.775 psi ... 116 psi
Operating medium	Compressed air to ISO 8573-1:2010 [7:4:4]
Note on operating and pilot medium	Lubricated operation possible
Corrosion resistance class CRC	1 - Low corrosion stress
LABS (PWIS) conformity	VDMA24364 zone III
Cleanroom suitability, measured according to ISO 14644-14	Class 4 according to ISO 14644-1
Ambient temperature	-5 °C ... 60 °C
Nominal torque	0.8 Nm
Tolerance for nominal tightening torque	±5%
Product weight	5 g
Type of mounting	External hex SW10
Pneumatic connection, port 1	Female thread M5
Pneumatic connection, port 2	For tubing outside diameter of 4 mm
Colour of release ring	Blue
Note on materials	RoHS compliant
Material housing	Brass, nickel-plated
Material release ring	POM
Material tubing seal	NBR
Material tubing clamp component	Stainless steel