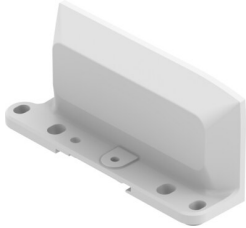


End plate CPX-AP-A-EPR

Part number: 8112477

FESTO



 General operating condition

Data sheet

Feature	Value
Dimensions (W x L x H)	30.4 mm x 117.2 mm x 53.6 mm
Type of mounting	On DIN rail via accessories Via through-hole for M5 screw Via through-hole for M6 screw
Product weight	116 g
Mounting position	Any, on H-rail: horizontal
Ambient temperature	-20 °C ... 50 °C
Note on ambient temperature	Observe ambient temperature derating according to IEC 61131-2:2017
Storage temperature	-20 °C ... 70 °C
Relative air humidity	5 - 95% Non-condensing
Nominal altitude of use	≤ 2000 m ASL (> 79.5 kPa)
Max. installation height	3500 m
Note on max. installation height	Observe ambient temperature derating according to IEC 61131-2:2017
Corrosion resistance class CRC	1 - Low corrosion stress
Vibration resistance	Transport application test with severity level 2 to FN 942017-4 and EN 60068-2-6
Note on vibration resistance	SG1 on DIN rail SG2 on direct mounting Transport application test with severity class 1 to FN 942017-4 and EN 60068-2-6
Shock resistance	Shock test with severity level 2 to FN 942017-5 and EN 60068-2-27
Note on shock resistance	30 g/11 ms to EN 60068-2-27 SG1 on DIN rail SG2 on direct mounting Shock test with severity level 1 to FN 942017-5 and EN 60068-2-27
Protection class	III
Overvoltage category	II
LABS (PWIS) conformity	VDMA24364-B2-L
Note on materials	RoHS compliant Free of halogen Free of phosphoric acid ester
Material end plate	Coated die-cast aluminium
Material screws	Nickel-plated steel
Material seals	Polyurethane foam