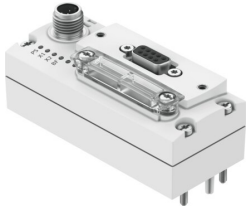


Bus node CTEU-PB-EX1C

Part number: 8107588

FESTO



 General operating condition

Data sheet

Feature	Value
Protocol	PROFIBUS DP
Dimensions (W x L x H)	40 mm x 91 mm x 50 mm
Grid dimension	40 mm
Type of mounting	On electrical interface On electrical connection block
Product weight	90 g
Ambient temperature	0 °C ... 50 °C
Storage temperature	-20 °C ... 70 °C
Degree of protection	IP65 IP67
Note on degree of protection	In mounted state Unused connections sealed
Corrosion resistance class CRC	2 - Moderate corrosion stress
LABS (PWIS) conformity	VDMA24364 zone III
CE mark (see declaration of conformity)	To EU EMC Directive In accordance with EU RoHS Directive
UKCA marking (see declaration of conformity)	To UK RoHS instructions
Approval	RCM c UL us - Listed (Oil)
Explosion protection	Class I, Div. 2 (CA) Class I, Div. 2 (US) Class II, Div. 2 (CA) Class II, Div. 2 (US) Zone 0 (BR) Zone 2 (ATEX) Zone 2 (CA) Zone 2 (CN) Zone 2 (IEC-EX) Zone 2 (KR) Zone 2 (UKEX) Zone 2 (US) Zone 22 (ATEX) Zone 22 (BR) Zone 22 (CA) Zone 22 (CN) Zone 22 (IEC-EX) Zone 22 (KR) Zone 22 (UKEX) Zone 22 (US)
ATEX category gas	II 3G
ATEX category dust	II 3D

Feature	Value
Explosion protection certification outside the EU	Class I, Div. 2 (CA) Class I, Div. 2 (US) Class II, Div. 2 (CA) Class II, Div. 2 (US) Class III (CA) Class III (US) EPL Dc (BR) EPL Dc (CA) EPL Dc (CN) EPL Dc (GB) EPL Dc (IECEX) EPL Dc (KR) EPL Dc (US) EPL Ga (BR) EPL Gc (CA) EPL Gc (CN) EPL Gc (GB) EPL Gc (IECEX) EPL Gc (KR) EPL Gc (US)
Explosion ignition protection type for gas	Ex ec IIC Gc X
Explosion ignition protection type for dust	Ex tc IIIC Dc X
Explosion ambient temperature	-5°C ≤ Ta ≤ +50°C
Certificate issuing authority	DNV 23.0350 X/00 IECEX IBE 17.0003 X KTL 24-KA4BO-0392X KTL 24-KA4BO-0393X KTL 24-KA4BO-0394X KTL 24-KA4BO-0395X NEPSI GY19.1188X SITIIAS CCC 202032230700686 UL E239998
Note on materials	RoHS compliant
Material housing	Process automation
LED display, product-specific	PS: Operating voltage for electronics and load supply X1: System status of module at I-Port 1 X2: System status of module at I-Port 2
LED display, bus-specific	BF: Bus fault
Diagnosis	Communication error System diagnostics Undervoltage
Operator controls	DIL switch
Note on fieldbus interface	Plug/socket M12x1 B-coded, 5-pin, IP65 protection Optional connection technology with accessories:
Fieldbus interface	PROFIBUS
Field bus, protocol	PROFIBUS DP
Fieldbus interface, function	Bus connection incoming/outgoing
Field bus, connection type	Socket
Field bus, connection system	Sub-D
Fieldbus interface, connection pattern	00995638
Field bus, connection pattern	9
Field bus interface, electrical isolation	Yes
Field bus interface, transmission rate	1.5 Mbps 12 Mbit/s 187.5 kbps 19.2 kbps 500 kbps 9.6 kbps 93.75 kbps
Max. address volume, inputs	16 Byte
Max. address volume, outputs	16 Byte
Parameterisation	Diagnostic behaviour Fail-safe response
Internal cycle time	1 ms per 1 byte of user data

Feature	Value
Configuration support	GSD file
Additional functions	System status via diagnostic test
Power supply, function	Electronics and load
Power supply, connection type	Plug
power supply, connection system	M12x1, A-coded according to EN 61076-2-101
Power supply, connection pattern	00995383
Power supply, number of pins/wires	5
Operational voltage range DC	18 V ... 30 V
Nominal operating voltage DC	24 V
Max. power supply	4 A
Intern power consumption nominal operating voltage	Typ. 100 mA