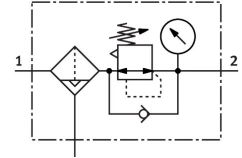


Filter regulator MS6-LFR-1/2-D6-E-P-VC-AG-BAR-B

Part number: 8098312

FESTO



General operating condition

Data sheet

Feature	Value
Size	6
Series	MS
Actuator lock	Rotary knob with detent
Mounting position	Vertical +/-5°
Grade of filtration	40 µm
Condensate drain	Manual, non-detenting
Design	Directly actuated piston regulator
Max. condensate volume	27.3 ml
Controller function	Output pressure constant With secondary exhausting With return flow function
Degree of condensate separation	>75 %
Symbol	00991587
Displayable units	bar psi
Pressure gauge (ANALOG) or Pressure display (DIGITAL)	With pressure gauge
Operating pressure	0.2 MPa ... 1 MPa
Operating pressure	2 bar ... 10 bar
Pressure regulation range	0.3 bar ... 7 bar
Max. pressure hysteresis	0.035 MPa
Max. pressure hysteresis	0.35 bar
Max. pressure hysteresis	5.075 psi
Standard nominal flow rate (standardised to DIN 1343)	5300 l/min
Operating medium	Compressed air to ISO 8573-1:2010 [7:4:4] Inert gas
Note on operating and pilot medium	Compatibility with ester oil not guaranteed
Corrosion resistance class CRC	1 - Low corrosion stress
LABS (PWIS) conformity	VDMA24364-B1/B2-L
Cleanroom suitability, measured according to ISO 14644-14	Class 7 according to ISO 14644-1
Storage temperature	-5 °C ... 50 °C
Air purity class at output	Compressed air to ISO 8573-1:2010 [7:4:4]
Media temperature	5 °C ... 50 °C
Ambient temperature	5 °C ... 50 °C
Pore size	40 µm
Product weight	589 g
Type of mounting	With accessories

Feature	Value
Pneumatic connection, port 1	G1/2
Pneumatic connection, port 2	G1/2
Note on materials	RoHS compliant
Material seals	NBR
Material rotary knob	POM
Material spring	High-alloy steel Galvanised steel
Material filter	Packaging unit
Material housing	Reinforced PA
Material bowl	Makrolon®
Material valve stem	POM