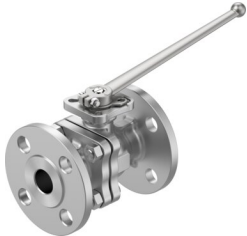


# Ball valve

## VZBF-1-P1-20-D-2-F0405-M-V15V15

Part number: 8097469

FESTO



[PDF](#) General operating condition

## Data sheet

Feature	Value
Design	2-way ball valve
Type of actuation	Mechanical
Sealing principle	Soft
Mounting position	Any
Type of mounting	Inline installation
Connection Process valve	Flange to ANSI B16.5 class 150
Switching position indicator	Slot direction = flow direction
Flange hole pattern	F0405
Inside diameter	24 mm
Nominal size DN	25
Valve function	2/2
Flow direction	Reversible
Nominal pressure PN	20
Breakaway torque at differential pressure, nominal pressure, process valve PN	12 Nm
Based on standard	ISO 5211
Symbol	00991458
Medium	Vapour Compressed air to ISO 8573-1:2010 [-:~:] Inert gases Water Neutral fluids
Media temperature	-20 °C ... 200 °C
Flow rate Kv	87 m³/h
Note on materials	RoHS compliant
LABS (PWIS) conformity	VDMA24364 zone III
Material housing	Cast stainless steel
Material number housing	1,4408
Material seat seal	PTFE PTFE, modified

<b>Feature</b>	<b>Value</b>
Material seals	Fluoro rubber Graphite PCTFE PTFE
Material ball	Cast stainless steel
Material number ball	1,4408
Material shaft	High-alloy stainless steel
Material number shaft	1,4401
Product weight	3200 g
Approval	API607 CRN
Explosion protection	Zone 1 (ATEX) Zone 2 (ATEX) Zone 21 (ATEX) Zone 22 (ATEX)
Corrosion resistance class CRC	4 - Very high corrosion stress