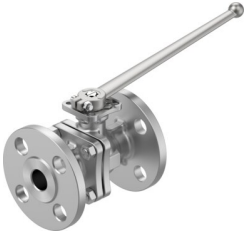


# Ball valve VZBF-3/4-P1-20-D-2-F0304-M-V15V15

Part number: 8097468

FESTO



[PDF](#) General operating condition

## Data sheet

| Feature   | Value  |
|---|--|
| Design  | 2-way ball valve   |
| Type of actuation   | Mechanical   |
| Sealing principle   | Soft   |
| Mounting position   | Any  |
| Type of mounting  | Inline installation  |
| Connection Process valve  | Flange to ANSI B16.5 class 150   |
| Switching position indicator  | Slot direction = flow direction  |
| Flange hole pattern   | F0304  |
| Inside diameter   | 20 mm  |
| Nominal size DN   | 20   |
| Valve function  | 2/2  |
| Flow direction  | Reversible   |
| Nominal pressure PN   | 20   |
| Breakaway torque at differential pressure, nominal pressure, process valve PN | 10 Nm  |
| Based on standard   | ISO 5211   |
| Symbol  | 00991458   |
| Medium  | Vapour<br>Compressed air to ISO 8573-1:2010 [-:~:]<br>Inert gases<br>Water<br>Neutral fluids |
| Media temperature   | -20 °C ... 200 °C  |
| Flow rate Kv  | 59 m <sup>3</sup> /h   |
| Note on materials   | RoHS compliant   |
| LABS (PWIS) conformity  | VDMA24364 zone III   |
| Material housing  | Cast stainless steel   |
| Material number housing   | 1,4408   |
| Material seat seal  | PTFE<br>PTFE, modified   |

| <b>Feature</b>                 | <b>Value</b>   |
|--------------------------------|--|
| Material seals                 | Fluoro rubber<br>Graphite<br>PCTFE<br>PTFE                         |
| Material ball                  | Cast stainless steel   |
| Material number ball           | 1,4408   |
| Material shaft                 | High-alloy stainless steel   |
| Material number shaft          | 1,4401   |
| Product weight                 | 2100 g   |
| Approval                       | API607<br>CRN  |
| Explosion protection           | Zone 1 (ATEX)<br>Zone 2 (ATEX)<br>Zone 21 (ATEX)<br>Zone 22 (ATEX) |
| Corrosion resistance class CRC | 4 - Very high corrosion stress                                     |