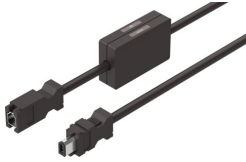


Adapter NEFM-REG6-K-0.5-B-REG6

Part number: 8097196

FESTO



 General operating condition

Data sheet

Feature	Value
Additional functions	for battery
Product weight	66 g
Electrical connection 1, function	Field device side
Electrical connection 1, design	Square
Electrical connection 1, connection type	Socket
Electrical connection 1, cable outlet	Straight
Electrical connection 1, connector system	Connection pattern RE
Electrical connection 1, number of connections/cores	6
Electrical connection 1, used connections/cores	6
Electrical connection 1, connection pattern	00995793
Electrical connection 2, function	Control side
Electrical connection 2, design	Square
Electrical connection 2, connection type	Plug
Electrical connection 2, cable outlet	Straight
Electrical connection 2, connector system	Connection pattern RE
Electrical connection 2, number of connections/cores	6
Electrical connection 2, used connections/cores	6
Electrical connection 2, connection pattern	00995792
Operational voltage range DC	0 V ... 30 V
Operational voltage range AC	0 V ... 30 V
Current rating at 40° C	1.6 A
Immunity to surge	2 kV
Shielding	Yes
Cable length	0.5 m
Cable characteristic	Standard
Test conditions cable	Test conditions on request
Bending radius, fixed cable	≥68 mm
Cable diameter	7.3 mm
Cable structure	3 x (2 x 0.2 mm ²)
Nominal cross section conductor	0.2 mm ²
Conductor nominal cross section	AWG24
Degree of protection	IP20
Note on degree of protection	In mounted state
Ambient temperature	-40 °C ... 80 °C
CE mark (see declaration of conformity)	In accordance with EU RoHS Directive
UKCA marking (see declaration of conformity)	To UK RoHS instructions

Feature	Value
LABS (PWIS) conformity	VDMA24364 zone III
Note on materials	RoHS compliant
Pollution degree	3
Corrosion resistance class CRC	0 - No corrosion stress
Material cable sheath	PVC
Cable sheath colour	Black
Material housing	PVC
Housing colour	Grey
Material insulating sheath	PVC