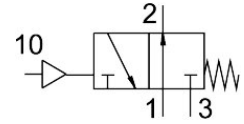


Pneumatic valve VUWS-LT30-M32U-M-G38

Part number: 8096575

FESTO



[PDF](#) General operating condition

Data sheet

Feature	Value
Valve function	3/2-way, single solenoid, open
Type of actuation	Pneumatic
Valve size	31 mm
Standard nominal flow rate (standardised to DIN 1343)	1600 l/min
pneumatic working port	G3/8
Operating pressure	0.1 MPa ... 1 MPa
Operating pressure	1 bar ... 10 bar
Design	Poppet seat
Type of reset	Mechanical spring
Approval	c UL us - Recognised (Oil)
Nominal size	7.9 mm
Exhaust-air function	Can be throttled
Sealing principle	Soft
Mounting position	Any
Manual override	None
Type of piloting	Direct
Pilot air supply	Internal
Flow direction	Non-reversible
Symbol	00995403
lap	Underlap
Pilot pressure	0.25 MPa ... 1 MPa
Pilot pressure	2.5 bar ... 10 bar
Switching time off	45 ms
Switching time on	12 ms
Explosion protection	The information in the certificate must be observed! Zone 1 (ATEX) Zone 2 (ATEX) Zone 21 (ATEX) Zone 22 (ATEX)
Operating medium	Compressed air to ISO 8573-1:2010 [7:4:4]
Note on operating and pilot medium	Lubricated operation possible (in which case lubricated operation will always be required)
Corrosion resistance class CRC	2 - Moderate corrosion stress
LABS (PWIS) conformity	VDMA24364-B1/B2-L
Cleanroom suitability, measured according to ISO 14644-14	Class 6 according to ISO 14644-1
Media temperature	-10 °C ... 60 °C
Pilot medium	Compressed air to ISO 8573-1:2010 [7:4:4]

Feature	Value
Ambient temperature	-10 °C ... 60 °C
Product weight	352 g
Type of mounting	On manifold rail With through-hole
Breather connection	Not ducted
Pilot air port 10	G1/8
Pneumatic connection, port 1	G3/8
Pneumatic connection, port 2	G3/8
Pneumatic connection, port 3	G3/8
Note on materials	RoHS compliant
Material seals	HNBR NBR TPE-U(PU)
Material housing	Painted die cast aluminium
Material piston slide	POM
Material screws	Galvanised steel