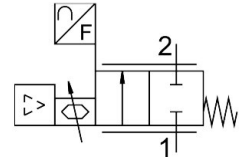


Mass Flow Controller (MFC) VEMD-L-6-14-20-D21-M5-1-R1-V4

Part number: 8086472

FESTO



[PDF](#) General operating condition

Data sheet

| Feature | Value |
|-------------------------------------|---|
| Size | 10 |
| Symbol | 00995693 |
| Degree of protection | IP40 |
| Note on degree of protection | IP51 with horizontal installation |
| Flow rate control range | 0 l/min ... 20 l/min |
| Note on the flow rate control range | The specified flow control range only applies at room temperature. At temperatures above room temperature, the max. adjustable flow may be reduced. |
| Flow direction | Non-reversible |
| Operating pressure | 0 MPa ... 0.25 MPa |
| Operating pressure | 0 bar ... 2.5 bar |
| Overload pressure | 0.6 MPa |
| Overload pressure | 6 bar |
| Overload pressure | 87 psi |
| Burst pressure | 1 MPa |
| Burst pressure | 10 bar |
| Burst pressure | 145 psi |
| Accuracy of flow rate | ± (4% o.m.v. + 1.25% FS) |
| Repetition accuracy in ± %FS | 1 %FS |
| Hysteresis in ± %FS | 2.5 %FS |
| Linearity error in ± %FS | 2 % |
| Temperature coefficient | 0.1 %/K |
| Valve function | 2-way proportional flow control valve |
| Nominal size | 1.4 mm |
| Pneumatic connection, port 1 | Female thread M5 |
| Pneumatic connection, port 2 | Female thread M5 |
| Medium | Argon Compressed air to ISO 8573-1:2010 [5:4:1] Carbon dioxide Oxygen (oxygen applications to IEC 60601-1 only on request) Nitrogen |
| Note on the medium | Lubricated operation not possible |
| Special characteristics | Oxygen-compatible to DIN EN 1797 |
| Environmental conditions | Not suitable for use in an environment enriched with oxygen to IEC 60601-1 |
| Duty cycle | 100% |
| Media temperature | 5 °C ... 40 °C |

| Feature | Value |
|--|---|
| Ambient temperature | 0 °C ... 50 °C |
| Storage temperature | -20 °C ... 70 °C |
| Nominal operating voltage DC | 24 V |
| Operational voltage range DC | 22 V ... 26.4 V |
| Max. current consumption | 40 mA |
| Max. electrical power consumption | 1 W |
| Electrical connection | 4-pin M8x1 A-encoded to EN 61076-2-104 Plug |
| Setpoint value | 0.2 - 10 V |
| Signal range analogue input | 0.2 - 10 V |
| Signal range analogue output | 0.2 - 10 V |
| Reverse polarity protection | For operating voltage connections |
| Product weight | 92 g |
| Material seals | EPDM NBR |
| Material cover | Reinforced PA |
| Note on materials | RoHS compliant |
| Dimensions (W x L x H) | 37 mm x 70 mm x 31 mm |
| Type of mounting | Direct mounting via thread |
| Mounting position | Any |
| Approval | RCM |
| Conforms to standard | EN 61000-6-2 (EMC) EN 61000-6-3 (EMC) |
| KC mark | KC-EMV |
| CE mark (see declaration of conformity) | To EU EMC Directive In accordance with EU RoHS Directive |
| UKCA marking (see declaration of conformity) | To UK instructions for EMC To UK RoHS instructions |
| LABS (PWIS) conformity | VDMA24364 zone III |