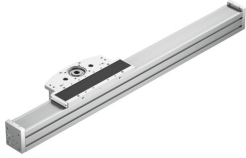


Cantilever axis ELCC-TB-KF-90-500-0H-P0-CR

Part number: 8082401

FESTO



[General operating condition](#)

Data sheet

Feature	Value
Effective diameter of drive pinion	50.93 mm
Working stroke	500 mm
Size	90
Stroke reserve	0 mm
Toothed-belt pitch	5 mm
Mounting position	Any
Guide	Recirculating ball bearing guide
Design	Electromechanical cantilever axis
Symbol	00991210
Max. acceleration	30 m/s ²
Max. speed	5 m/s
Repetition accuracy	±0.05 mm
Corrosion resistance class CRC	0 - No corrosion stress
LABS (PWIS) conformity	VDMA24364 zone III
Degree of protection	IP20
Ambient temperature	-10 °C ... 60 °C
2nd moment of area Iy	2667900 mm ⁴
2nd moment of area Iz	2049490 mm ⁴
Max. drive torque	33 Nm
Max. force Fy	13957 N
Max. force Fz	13523 N
Max. moment Mx	167 Nm
Max. moment My	1300 Nm
Max. moment Mz	1233 Nm
Max. feed force Fx	1200 N
Mass moment of inertia JH per metre of stroke	62.9 kgcm ²
Mass moment of inertia JL per kg of working load	6.5 kgcm ²
Mass moment of inertia JO	55.2 kgcm ²
Feed constant	160 mm/U
Reference service life	5000 km
Lubrication interval dependent on operating distance	1000 km
Moving mass for 0 mm stroke	5487 g
Additional moving mass per 10 mm stroke	97 g
Basic weight for 0 mm stroke	14787 g
Additional weight per 10 mm stroke	97 g
Material end cap	Anodised wrought aluminium alloy

Feature	Value
Material profile	Anodised wrought aluminium alloy
Note on materials	RoHS compliant
Material drive head	Anodised wrought aluminium alloy
Material guide rail	Rolled steel, Corrotect coated
Material housing	High-alloy stainless steel
Material slide	Anodised cast aluminium
Material toothed belt clamping piece	Anodised wrought aluminium alloy
Material toothed belt	Polychloroprene with glass filament and nylon coating