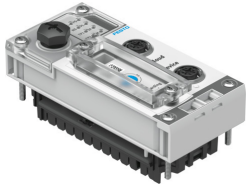


# Gateway CPX-IOT

Part number: 8069773

FESTO



 General operating condition

## Data sheet

Feature	Value
Dimensions (W x L x H)	50 mm x 107 mm x 50 mm
Grid dimension	50 mm
Type of mounting	via DIN rail
Product weight	130 g
Ambient temperature	-5 °C ... 50 °C
Storage temperature	-20 °C ... 70 °C
Relative air humidity	95% Non-condensing
Degree of protection	IP65 IP67
Corrosion resistance class CRC	0 - No corrosion stress
Vibration resistance	Transport application test with severity level 1 to FN 942017-4 and EN 60068-2-6
Shock resistance	Shock test with severity level 1 to FN 942017-5 and EN 60068-2-27
Protection against direct and indirect contact	PELV
LABS (PWIS) conformity	VDMA24364-B2-L
CE mark (see declaration of conformity)	To EU EMC Directive
Note on materials	RoHS compliant
Material housing	Process automation
Diagnostics via LED	Modify Module location Network status Network status port 1 Network status port 2 Power supply, electronics/sensors Load power supply System errors Connection to the cloud
Operator controls	DIP switch for resetting to delivery state Rotary switch for setting operating mode
IP address setting	DHCP Static via web server
Field bus, protocol	Ethernet OPC-UA
Fieldbus interface, function	Bus connection to Ethernet-based Festo devices
Field bus, connection type	Socket
Field bus, connection system	M12x1, D-coded to EN 61076-2-101
Fieldbus interface, connection pattern	00995716
Field bus, connection pattern	4
Field bus interface, electrical isolation	Yes

Feature	Value
Field bus interface, transmission rate	100 Mbit/s
Ethernet interface, connection type	Socket
Ethernet interface, protocol	TCP/IP
Ethernet interface, function	Connection to MQTT broker
Ethernet interface, connection system	M12x1, D-coded to EN 61076-2-101
Ethernet interface, connection pattern	00995716
Ethernet interface, number of pins/wires	4
Ethernet interface, transmission rate	10 Mbit/s 100 Mbit/s
Configuration support	Integrated web server
CPU data	256 MB RAM Dual core 533 MHz
Nominal DC operating voltage, electronics/sensors	24 V
Permissible voltage fluctuations for electronics/sensors	±25%
Intrinsic current consumption at nominal operating voltage for electronics/sensors	Typically 80 mA
Power failure bridging	10 ms