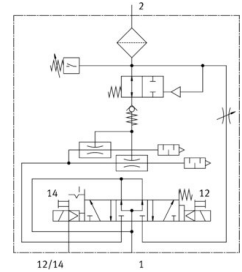
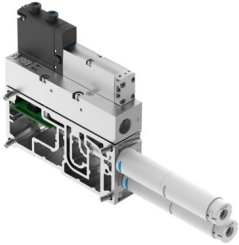


# Vacuum generator VABF-S4-2-V2B1-G38-CB-VH-30-AP

FESTO

Part number: 8067145



 [General operating condition](#)

## Data sheet

Feature	Value
Construction width	35 mm
Nominal size, Laval nozzle	3 mm
Silencer design	Open
Type of actuation	Electrical
Reverse polarity protection	For all electrical connections
Mounting position	Any
Ejector characteristic	High vacuum Standard
Manual override	Detenting Non-detenting Concealed
Measured variable	Relative pressure
Measuring principle	Piezoresistive
Switching function	Window comparator Threshold value comparator
Integrated function	Flow control On/off valve, electric Air-saving function, electric Power ejector pulse valve, electric Check valve Open silencer Vacuum switch
Symbol	00995925
Valve function	5/3-way, pressurised
Display type	LED LED indicator 2 digits
Displayable units	kPa
Setting range threshold value	0 MPa ... 0.099 MPa
Hysteresis setting range	0 MPa ... 0.09 MPa
Setting options	Teach-in Via parameter sets
Signal status display	LED
Switching status display sensor	LED
Operating pressure for max. suction flow rate	6 bar

Feature	Value
Operating pressure	4 bar ... 8 bar
Operating pressure for max. vacuum	6 bar
Max. vacuum	0.092 MPa
Nominal operating pressure	6 bar
Pilot pressure	4 bar ... 10 bar
Max. suction flow rate against atmosphere	167 l/min
Air supply time at nominal operating pressure	0.25 s
Operational voltage range DC	21.6 V ... 30 V
No-load supply current	30 mA
Duty cycle	100%
Approval	RCM
CE mark (see declaration of conformity)	To EU EMC Directive
Operating medium	Compressed air to ISO 8573-1:2010 [7:4:4]
Note on operating and pilot medium	Lubricated operation not possible
Corrosion resistance class CRC	0 - No corrosion stress
LABS (PWIS) conformity	VDMA24364-B1/B2-L
Media temperature	-5 °C ... 50 °C
Sound pressure level at nominal operating pressure	75 dB(A)
Degree of protection	IP65
Protection class	III
Ambient temperature	-5 °C ... 50 °C
Product weight	970 g
Pressure measuring range	-1 bar ... 0 bar
Display range start value	0 MPa
Display range end value	0.099 MPa
Accuracy in ± % FS	3 %FS
Reproducibility of switching values FS	1 %
Electrical control	Fieldbus
Electrical connection	Via CPX
Pneumatic connection, port 3	Open silencer
Vacuum connection	G3/8
Note on materials	RoHS compliant
Material seals	HNBR NBR
Material receiver nozzle	POM
Material housing	Wrought aluminium alloy
Material plate	Die-cast aluminium
Material adjusting screw	High-alloy stainless steel
Material silencer	POM Polyurethane foam
Material screws	Steel
Material transmitter nozzle	Wrought aluminium alloy