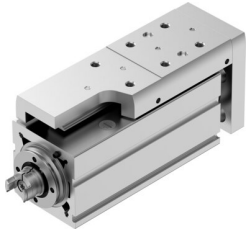


Mini slide EGSC-BS-KF-45-50-10P

Part number: 8048301

FESTO



 [General operating condition](#)

Data sheet

Feature	Value
Working stroke	50 mm
Size	45
Stroke reserve	0 mm
Reversing backlash theoretical	150 µm
Spindle diameter	10 mm
Spindle pitch	10 mm/U
Mounting position	Any
Guide	Recirculating ball bearing guide
Design	With ball screw
Type of motor	Stepper motor Servo motor
Referencing	Positive fixed stop block Negative fixed stop block Reference switch
Spindle type	Ball screw
Symbol	00992069
Position detection	Via proximity switch
Max. acceleration	15 m/s ²
Max. rotational speed	3600 rpm
Max. speed	0.6 m/s
Repetition accuracy	±0.015 mm
Duty cycle	100%
Corrosion resistance class CRC	0 - No corrosion stress
LABS (PWIS) conformity	VDMA24364 zone III
Suitability for the production of Li-ion batteries	Suitable for battery production with reduced Cu/Zn/Ni values (F1a)
Cleanroom suitability, measured according to ISO 14644-14	Class 9 according to ISO 14644-1
Sound pressure level	50 dB(A)
Degree of protection	IP40
Ambient temperature	0 °C ... 50 °C
Impact energy in end positions	1.4E-5 J
Note on the impact energy in the end positions	At maximum homing speed of 0.01 m/s
Dynamic basic load rating fixed bearing	7413 N
Dynamic basic load rating linear guide	3240 N
Dynamic basic load rating ball screw	3200 N
Idle torque at v _{max}	0.1 Nm
Idle torque at v _{min}	0.03 Nm

Feature	Value
Max. force Fy	1314 N
Max. force Fz	1314 N
Fy at theoretical life value of 100 km (only guide consideration)	3240 N
Fz at theoretical life value of 100 km (only guide consideration)	3240 N
Max. moment Mx	8.1 Nm
Max. moment My	7 Nm
Max. moment Mz	7 Nm
Mx at theoretical life value of 100 km (only guide consideration)	20 Nm
My at theoretical life value of 100 km (only guide consideration)	17 Nm
Mz at theoretical life value of 100 km (only guide consideration)	17 Nm
Max. radial force at drive shaft	180 N
Max. feed force Fx	120 N
Reference value effective load, horizontal	12 kg
Reference value effective load, vertical	12 kg
Static basic load rating ball screw	5900 N
Static basic load rating linear guide	5630 N
Mass moment of inertia JH per metre of stroke	0.13609 kgcm ²
Mass moment of inertia JL per kg of working load	0.02533 kgcm ²
Mass moment of inertia JO	0.01363 kgcm ²
Feed constant	10 mm/U
Static basic load rating fixed bearing	3966 N
Reference service life	5000 km
Maintenance interval	Lifetime lubrication
Moving mass for 0 mm stroke	212 g
Additional moving mass per 10 mm stroke	30 g
Product weight	922 g
Basic weight for 0 mm stroke	608 g
Additional weight per 10 mm stroke	63 g
Type of mounting	With female thread With centring sleeve With accessories Via cylindrical dowel pin
Interface code, actuator	V32
Note on materials	RoHS compliant
Material guide slide	Bearing steel
Material guide rail	Bearing steel
Material housing	Anodised wrought aluminium alloy
Material yoke plate	Anodised wrought aluminium alloy
Material piston rod	High-alloy stainless steel
Material slide	Anodised wrought aluminium alloy
Material ball screw nut	Bearing steel
Material spindle	Bearing steel