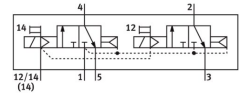


# Solenoid valve

## VSVA-B-T32C-AZTR-D2-1T1L

FESTO

Part number: 8034961



[General operating condition](#)

## Data sheet

| Feature   | Value   |
|---|---|
| Valve function  | 2x3/2 closed monostable   |
| Type of actuation                                     | Electrical  |
| Construction width                                    | 52 mm   |
| Standard nominal flow rate (standardised to DIN 1343) | 2400 l/min  |
| pneumatic working port                                | Sub-base size 2 to ISO 5599-2<br>G1/2                             |
| Operating voltage                                     | 24 V DC   |
| Operating pressure                                    | 0.3 MPa ... 1 MPa   |
| Operating pressure                                    | 3 bar ... 10 bar  |
| Design  | Piston gate valve   |
| Approval  | c UL us - Recognised (Oil)  |
| KC mark   | KC-EMV  |
| CE mark (see declaration of conformity)               | To EU EMC Directive   |
| Degree of protection                                  | IP65<br>NEMA 4  |
| Grid dimension  | 59 mm   |
| Exhaust-air function                                  | Can be throttled<br>Via throttle plate<br>Via individual sub-base |
| Sealing principle                                     | Soft  |
| Mounting position                                     | Any   |
| Conforms to standard                                  | ISO 5599-2  |
| Manual override                                       | Detenting via accessory<br>Non-detenting                          |
| Type of piloting                                      | Piloted   |
| Pilot air supply                                      | External  |
| Flow direction  | Non-reversible  |
| Symbol  | 00991817  |
| Signal status display                                 | LED   |
| Pilot pressure  | 0.3 MPa ... 1 MPa   |
| Pilot pressure  | 3 bar ... 10 bar  |
| Flow rate of valve                                    | 3000 l/min  |
| Flow rate of valve on individual sub-base             | 2600 l/min  |
| Flow rate of pneumatically interlinked valve          | 2400 l/min  |
| Switching time off                                    | 35 ms   |
| Switching time on                                     | 20 ms   |
| Duty cycle  | 100%  |

| Feature                                   | Value  |
|---|--|
| Max. positive test pulse with 0 signal    | 1000 µs  |
| Max. negative test pulse with 1 signal    | 3500 µs  |
| Nominal pick-up current per solenoid coil | 165 mA to 30 ms  |
| Nominal current with current reduction    | 35 mA after 30 ms  |
| Characteristic coil data                  | 24 V DC: 4.6 W   |
| Immunity to surge                         | 2.5 kV   |
| Pollution degree                          | 3  |
| Permissible voltage fluctuations          | +/-10%   |
| Operating medium                          | Compressed air to ISO 8573-1:2010 [7:4:4]  |
| Note on operating and pilot medium        | Lubricated operation possible (in which case lubricated operation will always be required) |
| Vibration resistance                      | Transport application test with severity level 2 to FN 942017-4 and EN 60068-2-6           |
| Shock resistance                          | Shock test with severity level 2 to FN 942017-5 and EN 60068-2-27                          |
| Corrosion resistance class CRC            | 0 - No corrosion stress  |
| LABS (PWIS) conformity                    | VDMA24364-B1/B2-L  |
| Media temperature                         | -5 °C ... 50 °C  |
| Relative air humidity                     | 0 - 90%  |
| Ambient temperature                       | -5 °C ... 50 °C  |
| Product weight                            | 740 g  |
| Electrical connection                     | Plug-in<br>To ISO 5599-2   |
| Type of mounting                          | On sub-base  |
| Pilot air port 12/14                      | Sub-base size 2 to ISO 5599-2  |
| Pilot exhaust port 82/84                  | Ducted<br>Not ducted as per standard<br>Either:  |
| Pneumatic connection, port 1              | Sub-base size 2 to ISO 5599-2  |
| Pneumatic connection, port 2              | Sub-base size 2 to ISO 5599-2  |
| Pneumatic connection, port 3              | Sub-base size 2 to ISO 5599-2  |
| Pneumatic connection, port 4              | Sub-base size 2 to ISO 5599-2  |
| Pneumatic connection, port 5              | Sub-base size 2 to ISO 5599-2  |
| Note on materials                         | RoHS compliant   |
| Material seals                            | Fluoro rubber<br>HNBR<br>NBR   |
| Material housing                          | Die-cast aluminium<br>Process automation   |
| Material screws                           | Galvanised steel   |